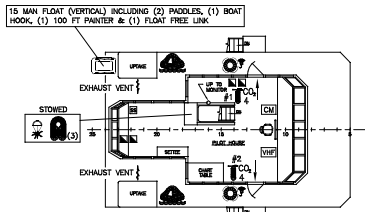
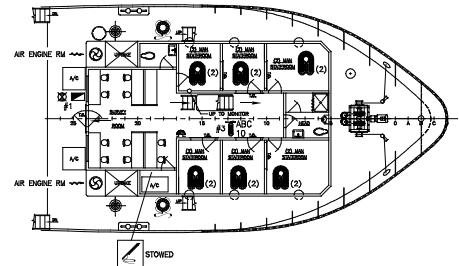


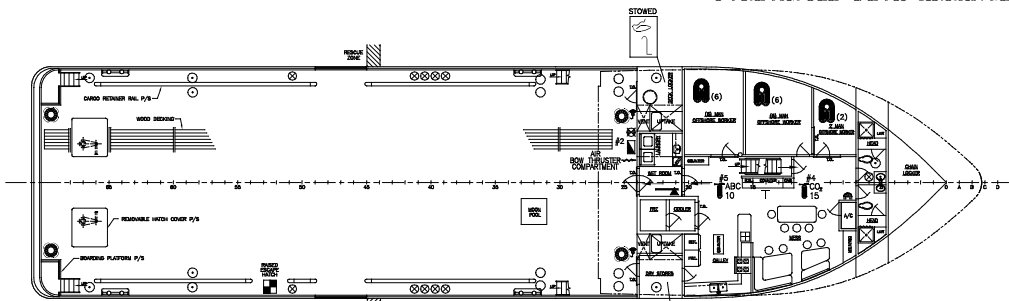
PILOT HOUSE TOP ARRANGEMENT



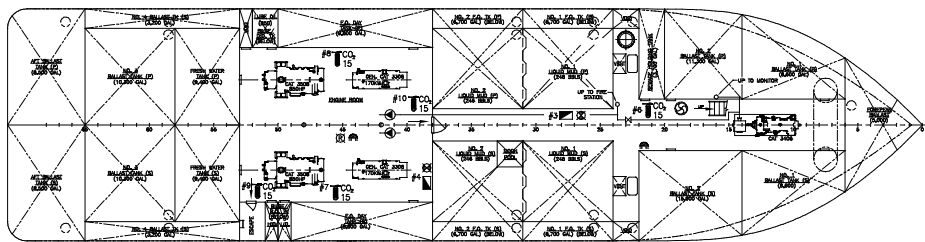
PILOT HOUSE ARRANGEMENT



FORECASTLE DECK ARRANGEMENT



MAIN DECK ARRANGEMENT



HOLD ARRANGEMENT

LEGEND

QTY	SYMBOL	DESCRIPTION
3	ABC 10	10 lb ABC DRY CHEMICAL (PORTABLE)
3	CO2 4	4 lb CO <sub>2</sub> (PORTABLE)
7	CO2 15	15 lb CO <sub>2</sub> (PORTABLE)
4	HYDRANT	FIRE HYDRANT
5	STATION	FIRE STATION W/50FT 1 1/2" HOSE SOLID COMB. NOZZLE & SPANNER
4	ALARM	GENERAL ALARM
1	FLASHING	FLASHING RED LIGHT GENERAL ALARM
1	CONTACT	CONTACT MAKER GENERAL ALARM
1	AXE	FIRE AXE
4	EMERGENCY	EMERGENCY SHUT DOWN F.O. PUMP & VENT FANS
1	PUMP	FIRE PUMP CONTROL
2	LIFEBUOY	LIFEBUOY
2	LIFEBUOY	LIFEBUOY W/100 FT LIFE LINE
4	LIFEBUOY	LIFEBUOY W/SELF-IGNITING LIGHT
29	JACKET	LIFEJACKET W/LIGHT (QTY)
1	FIRST AID	FIRST AID KIT
1	EMERGENCY	EMERGENCY POSITION INDICATING RADIO BEACON (406 Mhz)
2	RAFT	16 MAN INFLATABLE RAFT SOLAS (A) W/LAUNCH CRADLE & HYDRO. RELEASE
1	RAFT	15 MAN FLOAT W/(2) 4ft PADDLES
1	HATCHES	ESCAPE HATCHES
1	RADIO	VHF RADIO
12	ROCKET	ROCKET PARACHUTE FLARES
1	HORN	SHIPS HORN
1	LINE	LINE THROWING APPLIANCE
1	AUXILIARY	AUXILIARY LINE (LINE THROWING APP.)
11	EMERGENCY	EMERGENCY REACH ROD SHUT-OFF FUEL OR FP BALLAST
2	FIRE/BALLAST	FIRE/BALLAST PUMP W/CONTROLS
1	RESCUE	RESCUE PLATFORM (STOWED)
3	VENTILATION	VENTILATION FAN
2	EMERGENCY	EMERGENCY REACH ROD "T" HANDLE FUEL OR FP BALLAST SHUT-OFF
2	EMBARKATION	EMBARKATION LIGHT
1	MONITOR	FIRE MONITOR
1	EXIT	EXIT
5	VENTILATION	VENTILATION AIR IN/OUT WITH COVER
3	SEARCH	SEARCH LIGHT

MISS EMMA McCALL

REV.	DESCRIPTION	DATE	BY
<b>MASTER BOAT BUILDERS, INC.</b> P.O. Box 702      Bayou LaBatre, AL 36509 150'-0" x 36'-0" x 12'-0" OSV			
Sheet No. 1	C.B.	Sheet No. 1	NDNE
of 354		Sheet No. 1	9-03
<b>FIRE CONTROL/LIFE SAVING PLAN</b>			
Sheet No. 1	of 1	Sheet Name:	A-4