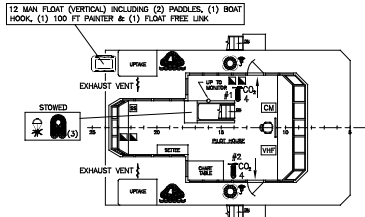
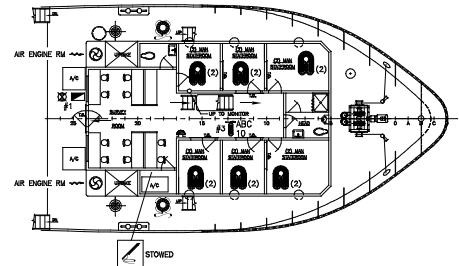


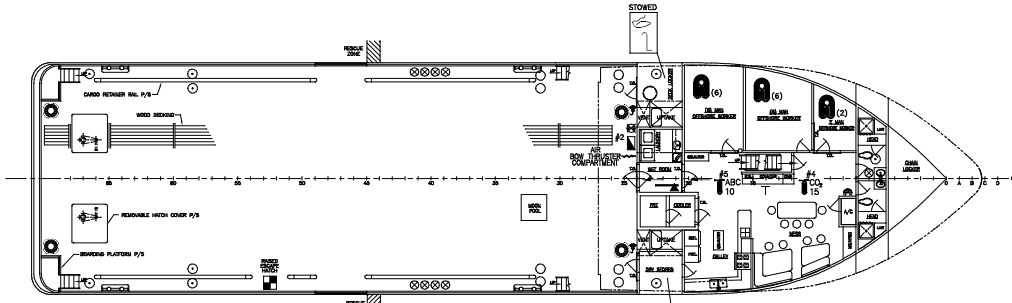
PILOT HOUSE TOP ARRANGEMENT



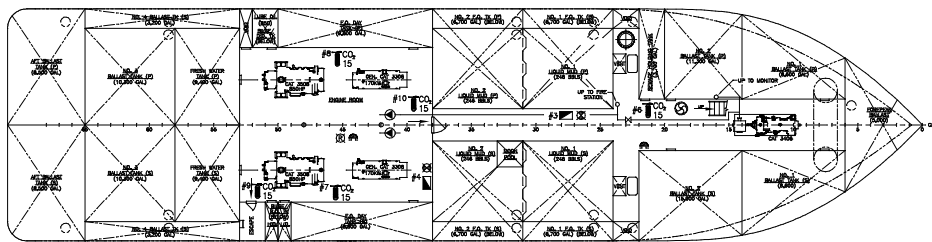
PILOT HOUSE ARRANGEMENT



FORECASTLE DECK ARRANGEMENT



MAIN DECK ARRANGEMENT



HOLD ARRANGEMENT

LEGEND

QTY	SYMBOL	DESCRIPTION
3	[Symbol]	10 lb ABC DRY CHEMICAL (PORTABLE)
3	[Symbol]	4 lb CO ₂ (PORTABLE)
7	[Symbol]	15 lb CO ₂ (PORTABLE)
4	[Symbol]	FIRE HYDRANT
5	[Symbol]	FIRE STATION W/50FT 1 1/2" HOSE SOLID COMB. NOZZLE & SPANNER
4	[Symbol]	GENERAL ALARM
1	[Symbol]	FLASHING RED LIGHT GENERAL ALARM
1	[Symbol]	CONTACT MAKER GENERAL ALARM
1	[Symbol]	FIRE AXE
4	[Symbol]	EMERGENCY SHUT DOWN F.O. PUMP & VENT FANS
1	[Symbol]	FIRE PUMP CONTROL
2	[Symbol]	LIFEBUOY
2	[Symbol]	LIFEBUOY W/100 FT LIFE LINE
4	[Symbol]	LIFEBUOY W/SELF-IGNITING LIGHT
29	[Symbol]	LIFEJACKET W/LIGHT (QTY)
1	[Symbol]	FIRST AID KIT
1	[Symbol]	EMERGENCY POSITION INDICATING RADIO BEACON (406 Mhz)
2	[Symbol]	16 MAN INFLATABLE RAFT SOLAS (A) W/LAUNCH CRADLE & HYDRO. RELEASE
1	[Symbol]	12 MAN FLOAT W/(2) 4ft PADDLES
1	[Symbol]	ESCAPE HATCHES
1	[Symbol]	VHF RADIO
12	[Symbol]	ROCKET PARACHUTE FLARES
1	[Symbol]	SHIPS HORN
1	[Symbol]	LINE THROWING APPLIANCE
1	[Symbol]	AUXILIARY LINE (LINE THROWING APP.)
9	[Symbol]	EMERGENCY REACH ROD SHUT-OFF FUEL OR FP BALLAST
2	[Symbol]	FIRE/BALLAST PUMP W/CONTROLS
1	[Symbol]	RESCUE PLATFORM (STOWED)
3	[Symbol]	VENTILATION FAN
2	[Symbol]	EMERGENCY REACH ROD "T" HANDLE FUEL OR FP BALLAST SHUT-OFF
2	[Symbol]	EMBARKATION LIGHT
1	[Symbol]	FIRE MONITOR
	[Symbol]	EXIT
5	[Symbol]	VENTILATION AIR IN/OUT WITH COVER
3	[Symbol]	SEARCH LIGHT

MISS EMMA McCALL

REV.	DESCRIPTION	DATE	BY
MASTER BOAT BUILDERS, INC. P.O. Box 702, Bayou LaBatre, AL 36509			
150'-0" x 36'-0" x 12'-0" OSV			
Sheet No. 354	C.B.	Sheet No. 1-9-03	None
FIRE CONTROL/LIFE SAVING PLAN			
Scale: 1" = 1'	Block Name: A-5	0	