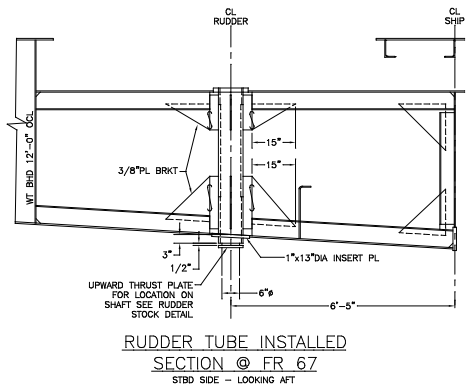
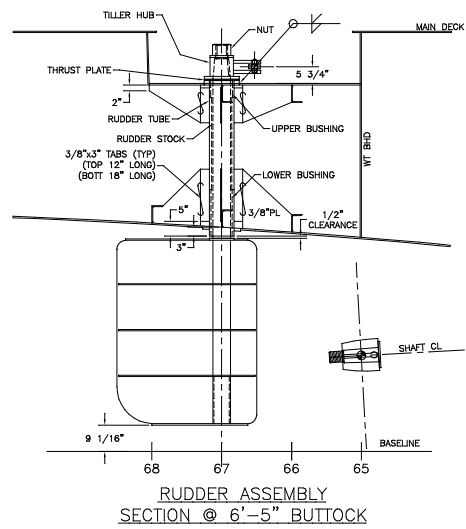


PLAN VIEW A'  
MAIN DECK

NOTE  
ROD END OF CYLINDER FURNISHED  
WITH SPHERICAL BEARINGS.



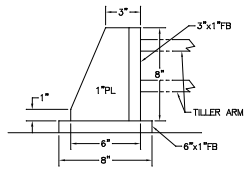
RUDDER TUBE INSTALLED  
SECTION @ FR 67  
STBD SIDE - LOOKING AFT



RUDDER ASSEMBLY  
SECTION @ 6'-5" BUTTOCK

GENERAL NOTES

1. ALL MECHANICAL TUBING TO BE A53 GR. B.
2. KEY TO BE SAME MATERIAL AS SHAFT. 1 1/2"x1".
3. 1/8" CLEARANCE IS ALLOWED AT ASSEMBLY OF CLEVISSES.
4. DESIGN SPEED IS 11 KNOTS AT 45 DEG. RUDDER UNDER FULL LOAD.
5. SYSTEM DESIGNED FOR 12,550 FT./LBS TORQUE.
6. ROD END SIDE EMBOSSED WITH WORD "UP" MUST FACE UPWARD.
7. CYLINDERS AND HYDRAULIC COMP. TO BE FURNISHED BY JASTRAM.



SECTION A-A  
RUDDER STOP  
4 REQ'D  
SCALE: 3"=1'-0"

1	REVISED CYLINDER LOCATION TO AGREE W/JASTRAM DRAWING.	10/21/02	C.B.
REVISIONS			
<b>MASTER BOAT BUILDERS, INC.</b>			
P.O. Box 702      Bayou LaBatre, AL 36509			
150'-0" x 36'-0" x 12'-0"			
OSV			
Drawn by: CONRAD	Checked by:	Scale: 3/4"=1'-0"	
Job No. 354		Drawn: 8-19-02	
<b>STEERING ARR &amp; RUDDER DET</b>			
Sheet: 1 of 2	Drawing Number: M-2		

PLOT 1=16