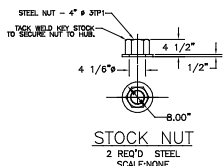
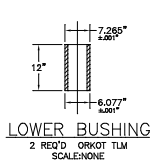


NOTE: ROTATE KEYWAY TO BE IN LINE WITH RUDDER BLADE. KEYWAY TO BE ON FORWARD SIDE OF STOCK.

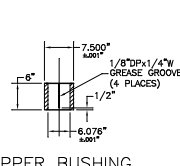
**RUDDER STOCK UPPER END DETAILS**  
2-REQ'D



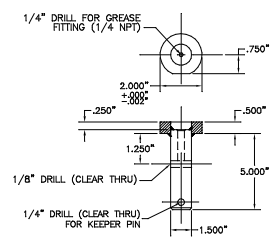
**STOCK NUT**  
2 REQ'D STEEL SCALENONE



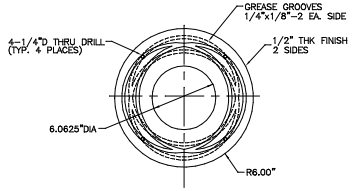
**LOWER BUSHING**  
2 REQ'D ORKOT TLM SCALENONE



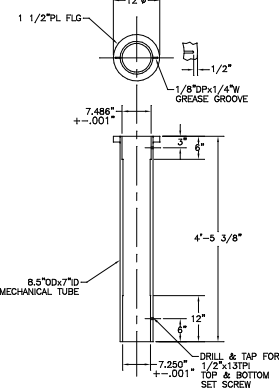
**UPPER BUSHING**  
2 REQ'D BRONZE SCALENONE



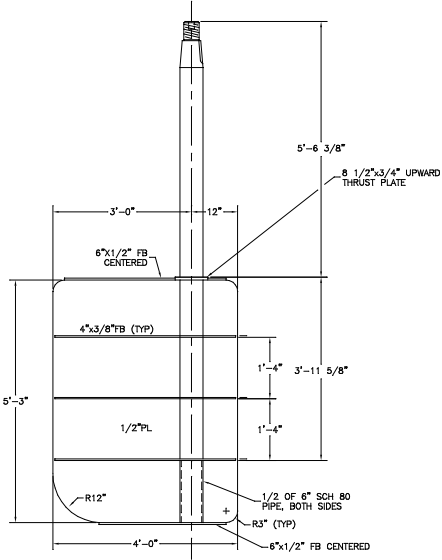
**TILLER ARM PINS**  
4 REQ'D STEEL SCALENONE



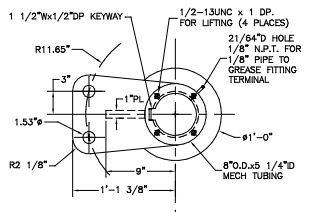
**THRUST PLATE**  
2 REQ'D BRONZE SCALE: 3"=1'-0"



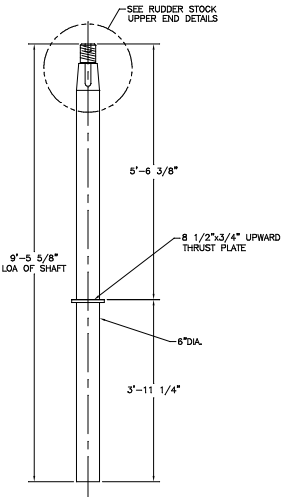
**RUDDER TUBE**  
2 REQ'D



**RUDDER DETAIL**  
2 REQ'D



**TILLER HUB**  
2 REQ'D STEEL SCALENONE



**RUDDER STOCK**  
2 REQ'D ARMCO AQUAMET 17

1	1. REVISED TILLER HUB TO AGREE W/ASTRAM DRAWING.	10/21/02	C.B.
REVISION			
<b>MASTER BOAT BUILDERS, INC.</b>			
P.O. Box 702		Opoka, Alabama, AL 36509	
150'-0" x 36'-0" x 12'-0" OSV			
Drawn by	CONCAD	Approved by	1"=1'-0" & NOTED
Scale	3/8"	Sheet	8-18-02
<b>STEERING ARR &amp; RUDDER DET</b>		M-2	
Sheet	2 of 2	Drawn by	1

PLOT 1=12