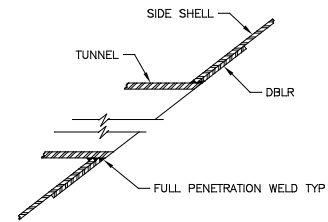
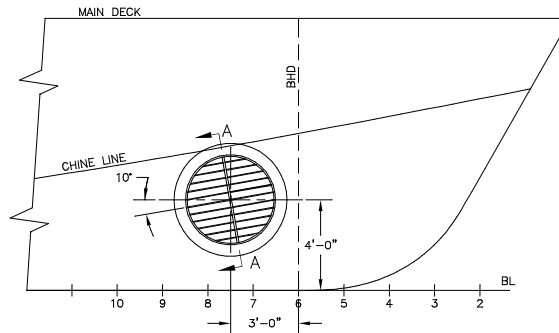


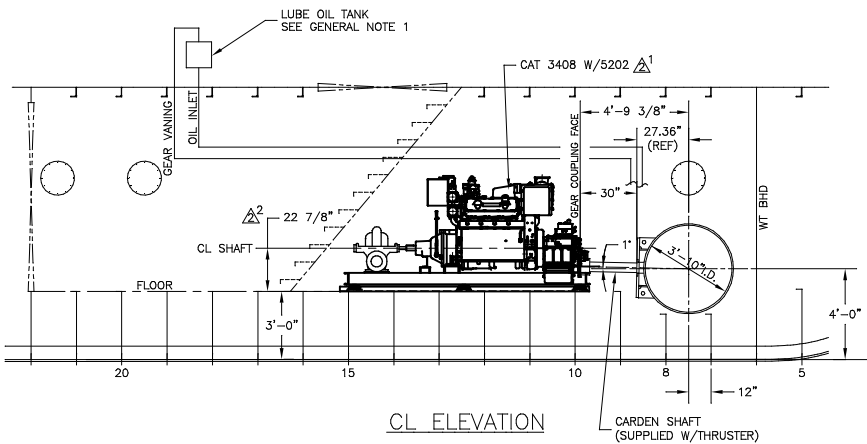
SECTION A-A
SCALE: 1"=1'-0"



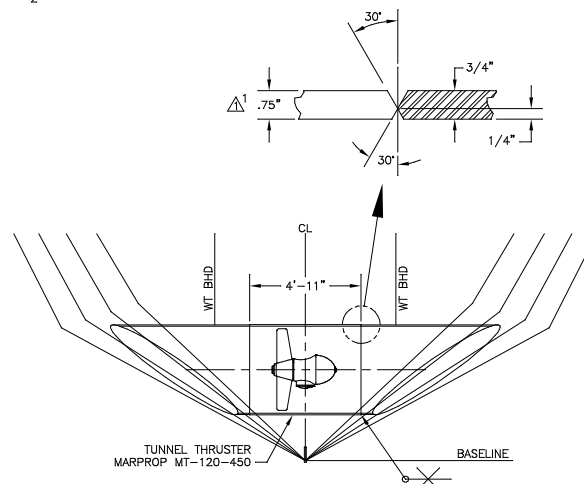
DETAIL B-B
SCALE: NONE



OUTBOARD PROFILE



CL ELEVATION



SECTION @ FR 6,7,8 & 9

GENERAL NOTES

1. LUBE OIL TANK (SUPPLIED W/THRUSTER) TO BE MOUNTED 40" ABOVE MAIN DECK.
2. TO AVOID CONDENSATION WATER, FILL IN GEAR OIL BEFORE THE SHIP IS LAUNCHED.

REV.	DESCRIPTION	DATE	BY
2	1. CHANGED GEAR; WAS 5145. 2. CHANGED CL SHAFT DIM; WAS 2 1/4"	11/14/02	CB
1	1. CHANGED TUNNEL THICKNESS TO AGREE W/MANUFACTURERS DWG. 2. CORRECTED GEAR MODEL NUMBER.	8/22/02 9/3/02	CB

REVISIONS

MASTER BOAT BUILDERS, INC.
P.O. Box 702 Bayou LaBatre, AL 36509

150'-0" x 36'-0" x 12'-0"
OSV

Drawn By : C. BRAUN	Approved By :	Scale : 3/8"=1'-0"
Plot No. 354	Date : 7-16-02	

BOW THRUSTER INSTALLATION

Sheet : 1 of 1	Drawing Number :	Rev. 2
Contract No.	M-4	