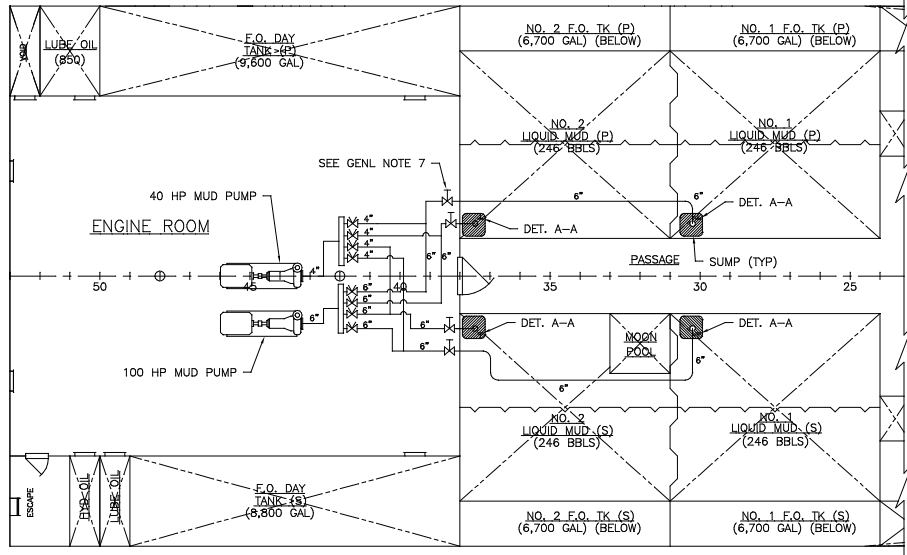
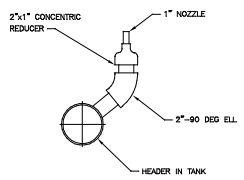


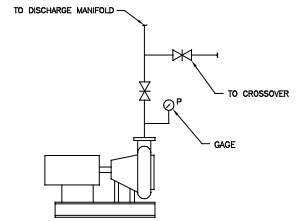
LIQUID MUD DISCHARGE AND CIRC.



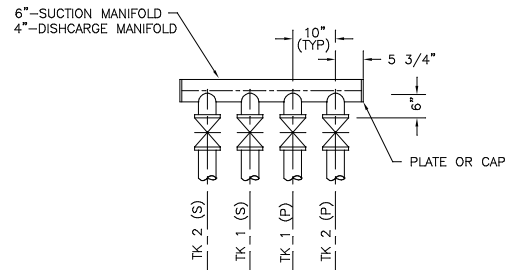
LIQUID MUD SUCTION AND CIRC.



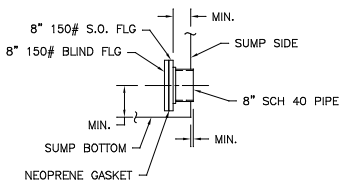
NOZZLE DETAILS



PUMP INSTALLATION DETAIL



SUCTION AND DISCHARGE MANIFOLD DETAIL



DETAIL A-A
SUMP CONN. TO DBL BOTTOM FUEL OIL TANKS TYPICAL 4 PLACES

MATERIAL SCHEDULE										
NO.	SERVICE	SIZES	PIPE	VALVES		FITTINGS	TAKE-DOWN JOINTS	ASTM SPEC		GASKETS
				BODIES	TRIM			BOLTS	NUTS	
1	LIQUID MUD SUCTION/DISCHARGE	6" 3"x4"	BLK STL ASTM A-53-B SCH 80	BUTTERFLY WAFER, D.I. ASTM A-395		BW, STD WT ASTM A 234 ANSI B16.9	FLG, 150# ASTM A-105 ANSI B16.5	A 305 GR B	A 563 GR A	

PUMP TABLE						
SERVICE	QTY	TYPE	CAPACITY	DISCH PRESS PSIG	HP	REMARKS
LIQUID MUD	1	CFG	400GPM@ 150 FT HD		40	4" x 3" x 10" MISSION - ELECTRIC DRIVE
LIQUID MUD	1	CFG	600GPM@ 150 FT HD		100	5" x 4" x 12" MISSION - ELECTRIC DRIVE

SYMBOL LIST	
SYMBOL	DESCRIPTION
	VALVE, KNIFE GATE
	VALVE, BUTTERFLY/WAFER
	GAUGE, PRESSURE

GENERAL NOTES

1. LIQUID MUD TRANSFER AND CIRCULATING SYSTEM DESIGNED FOR 2.4 SPECIFIC GRAVITY.

SYSTEM CONVERSION PROCEDURE

1. REMOVE 3" BUTTERFLY VALVES MARKED "*" ADJACENT TO LIQUID MUD TANK, LOCATED AT FORWARD ENGINE ROOM BULKHEAD.
2. REPLACE REMOVED 3" BUTTERFLY VALVES WITH 150# BLIND FLANGES AND MAKE TIGHT.
3. REMOVE BLIND FLANGES FROM 8" SPOOL PIECE LOCATED IN SUMPS (DET. A-A).
4. THIS WILL MAKE EACH LIQUID MUD TANK AN INTEGRAL PART OF THE FUEL OIL TANK BELOW IT. EXISTING FUEL OIL PIPING DIAGRAMS WILL BE APPLICABLE.
5. USE COMBINATION SOUNDING TABLES WHEN SOUNDING THESE TANKS THROUGH FUEL OIL SOUNDING TABLES.
6. REVERSE PROCESS WHEN SEGREGATING LIQUID MUD AND FUEL OIL TANKS.
7. CONTROLLED LOCALLY AND REMOTELY FROM A READILY ACCESSIBLE AND SAFE LOCATION OUTSIDE OF ENGINE ROOM.

REV.	DESCRIPTION	DATE	BY
REVISIONS			
MASTER BOAT BUILDERS, INC.			
P.O. Box 702		Boyau LaBatre, AL 36509	
150'-0" x 36'-0" x 12'-0"			
OSV			
Drawn By: C. BRAUN	Approved By:	Scale: 1/4"=1'-0"	
Tab No: 354		Date: 7-2-02	
LIQUID MUD W/CONVERSION TO F.O.			
Sheet: 1 of 1	Drawing Number:	P-12	0