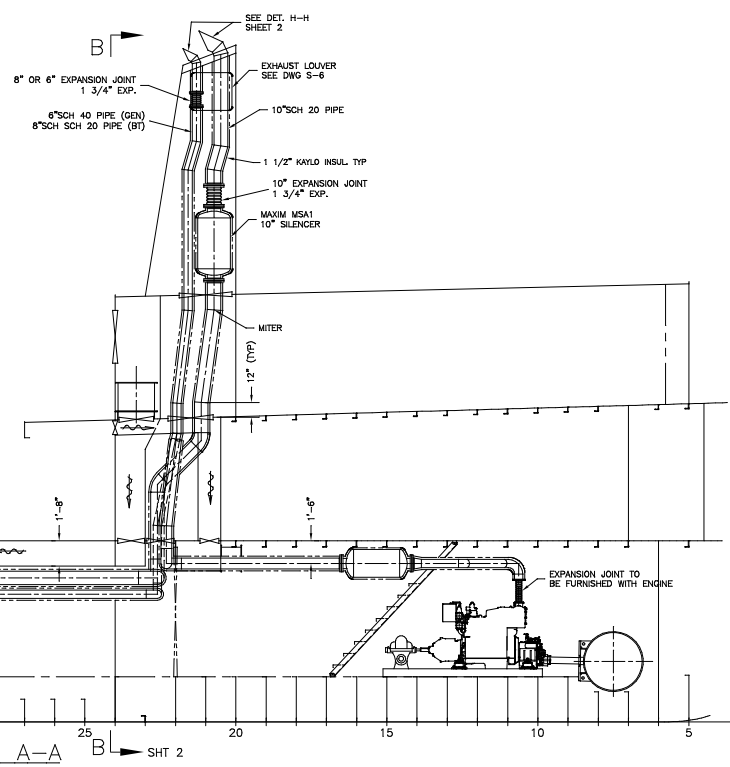


**MATERIAL SCHEDULE**

SYSTEMS		SIZES	PIPE	VALVES		FITTINGS	TAKE-DOWN COOKS	ASTM SPEC		GASKETS
NO.	SERVICE			BODIES				BOLTS	NUTS	
1	EXHAUST & VENTILATION	6"	BLK STL ASTM A-53-B SCH 40			BNL STD WT ANSI A 234 ANSI B16.9	FLG. 150# ASTM A-105 ANSI B16.5	A 305 GR B	A 563 GR A	
		8" & 10"	BLK STL ASTM A-53-B SCH 20							



VENTILATION INTAKE AIR	
3508 ME	2002 x 2 = 4004
3306 GEN	424 x 1 = 424
ENGINE RM VOL.	6480
	10908 REQD CFM
3408	1028 x 1 = 1028
BOW THRUSTER SPACE VOL.	2560
	3588 REQD CFM

EXHAUST SYSTEM BACK PRESSURE	
DESIGN CRITERIA	
3508 MAIN	4517CFM/712 DEG F.=22.4"H2O
3306 GEN	1098CFM/846 DEG F.=7.7"H2O
3408 BT ENG.	2274CFM/682 DEG F.=21.6"H2O
NOTE: MAXIMUM ALLOWABLE BACK PRESSURE ON ALL ENGINES IS 27"H2O.	

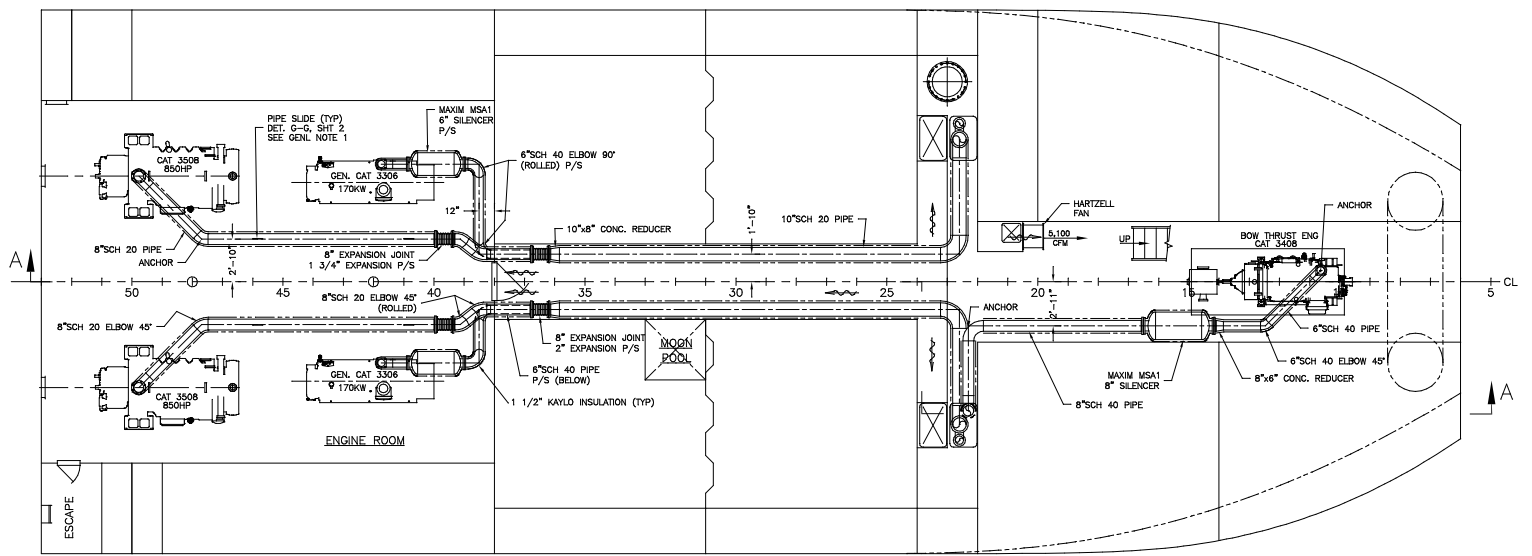
EQUIPMENT LIST				
EQUIPMENT	QTY	DESCRIPTION	MFR	REMARKS
INTAKE FAN	2	28", MODEL WL3 SHP, 1750RPM	HARTZELL	12,800CFM @ 1-1/4 S.P.
INTAKE FAN	1	20", MODEL WHS 1HP, 1725RPM	HARTZELL	5,100CFM @ 1/2 S.P.

**GENERAL NOTES**

- PIPE SLIDES TO BE SPACED AT A MAX. OF 10'-0" APART.
- ALL PIPE 90° ELBOWS ARE LONG RAD. UNLESS NOTED OTHERWISE.

**ENGINE SCHEDULE**

2	- MAIN ENGINE CAT 3508B 850HP @ 1200 RPM
2	- GENERATOR CAT 3306 170KW @ 1800 RPM
1	- BOW THRUSTER CAT 3408 480HP @ 1800 RPM



**HOLD PLAN**

1	1. ADDED MATERIAL SCHEDULE.	1-9-03	CB
REV.	DESCRIPTION	DATE	BY
REVISIONS			
<b>MASTER BOAT BUILDERS, INC.</b>			
P.O. Box 702		Bayou LaBatre, AL 36509	
150'-0" x 36'-0" x 12'-0"			
OSV			
Drawn By: C. BRAUN	Approved By:	Scale: 1/4"=1'-0"	
Hull No. 354	Date: 7-1-02		
<b>EXHAUST PIPING &amp; VENTILATION</b>			
Sheet: 1 of 2	Contract No.	Design Number: P-13	Rev: 1