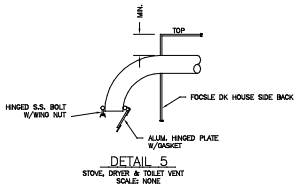
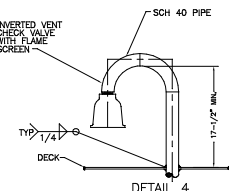
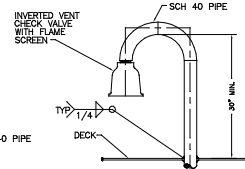


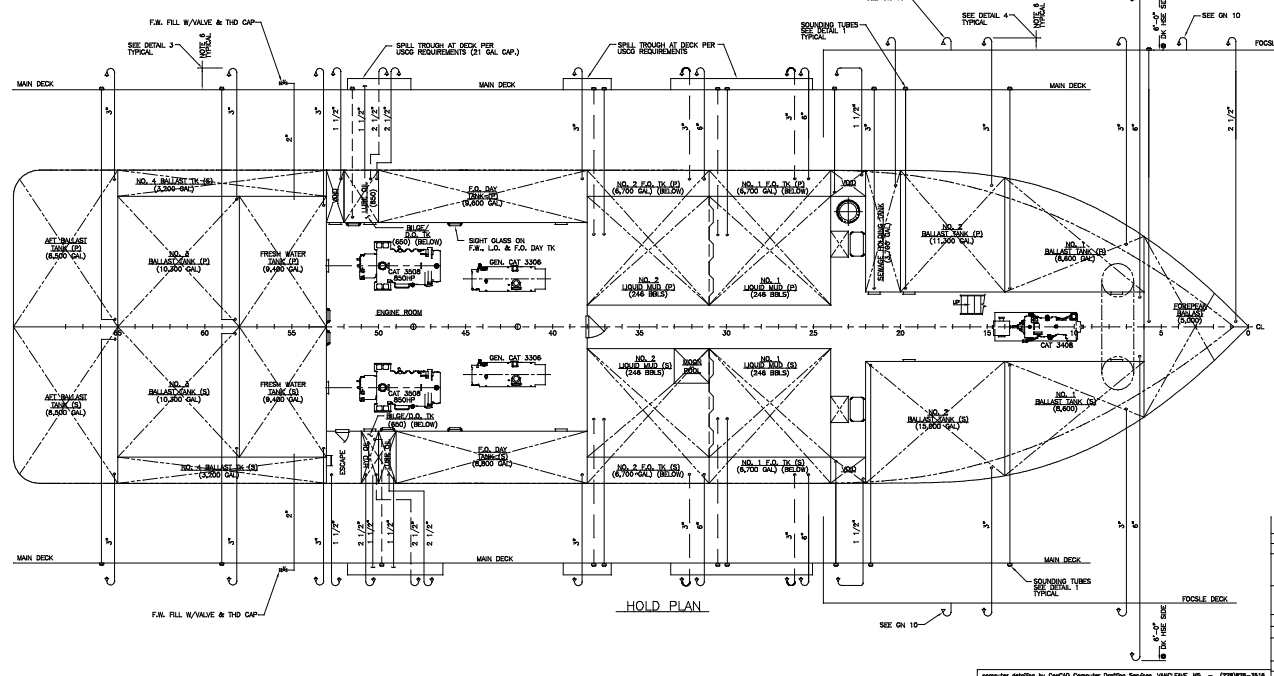
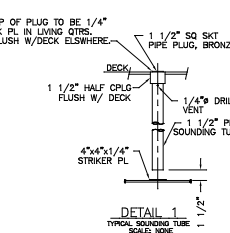
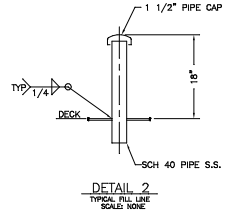
SYMBOL	DESCRIPTION
	VALVE, BUTTERFLY
	DECK CONNECTION, SOUNDING TUBE
	FILL W/ THROUGH CAP
	GLASS W/ VENT CHECK VALVE
	INNER BOTTOM PIPING
	PIPPING ALL OTHER TANKS

MATERIAL SCHEDULE									
NO.	SYSTEMS	SIZES	PIPE	VALVES		FITTINGS	TANKS	ASTM SPEC	GASKETS
				BOOKS	TRIM				
1	FILLS	ALL	S.S. SCH 40	N/A	N/A	SCH CAP.M. 180#, ASTM A-197	N/A	N/A	N/A
2	VENTS	ALL	S.S. SCH 40	INVT VENT CHK VALVE	BRONZE THD COPPER BALL	WELDED THD UNIONS, NUTS, WASHERS, COPPER BALLS	N/A	N/A	N/A
3	SOUNDING TUBES	ALL	S.S. SCH 40	N/A	N/A	F.S. W/ALY CRPLD W/BRZ PLUG	N/A	N/A	N/A
4	SIGHT GLASS	3/4"		BRASS		300PSI			

VENT SIZE TOTALS	
QUANTITY	PIPE SIZE
21	3" VENT LINES
9	2 1/2" VENT LINES
4	1 1/2" VENT LINES
6	6" VENT LINES



- GENERAL NOTES**
- PIPE FITTINGS AND VALVE MATERIALS ARE SPECIFIED IN MATERIAL SCHEDULE.
 - ALL TANKS AND TANK VENTS SHALL BE AIR TESTED TO 1.0 PSI.
 - ALL PIPING TO BE SUPPORTED WITH HANGERS AT SUITABLE INTERVALS IN ACCORDANCE WITH GOOD MARINE PRACTICE.
 - ALL DECK OR BULKHEAD PENETRATIONS SHALL HAVE DOUBLE CONTINUOUS FILLET WELDS. OPENINGS MADE BY PIPES PASSING THROUGH STRUCTURE SHALL BE REINFORCED AS NECESSARY.
 - ALL FILLS, VENTS AND SOUNDS MUST BE CLEARLY MARKED.
 - HEIGHTS OF ALL TANK VENTS SHALL BE A MINIMUM OF 30" ABOVE MAIN DECK AND 17 1/2" ABOVE FOCLE DECK.
 - SIGHT GLASS ON INTERNAL HULL TANKS SUCH AS FRESHWATER, HYDRAULIC OIL, ETC. TO BE KINDO 9000.
 - ALL SOUNDING TUBES TO BE LOCATED OUTSIDE OF WOOD DECKING, WHEN POSSIBLE.
 - THIS DIAG REPRESENTS A DIAGRAMMATIC TYPE SYSTEM DESCRIPTION, DO NOT SCALE. SOME EQUIPMENT AND PIPE RUNS MAY BE SHOWN OUT OF PLACE TO ALLOW ALL SYSTEM COMPONENTS TO BE CLEARLY SHOWN.
 - VENT CHAIN LOCKER & DECK LOCKERS 1/2" DIA VENT.
 - STOVE, OVEN & TOILET VENTS TO BE LOCATED AS HIGH AS POSSIBLE & EQUIPPED WITH CLOSING DEVICE, SEE DETAIL 5.



REV.	DESCRIPTION	ISSUING	DATE	BY
MASTER BOAT BUILDERS, INC.				
P.O. Box 702 Bayport, Louisiana, AL 36509				
150'-0" x 36'-0" x 12'-0" OSV				
Drawn by:	C. BRAUN	Approved by:		Scale: 3/16"=1'-0"
Sheet No.:	354	Sheet:	6-4-02	
VENTS, FILLS & SOUNDS DIAGRAM				Sheet 1 of 1
Drawing Number: P-5				0