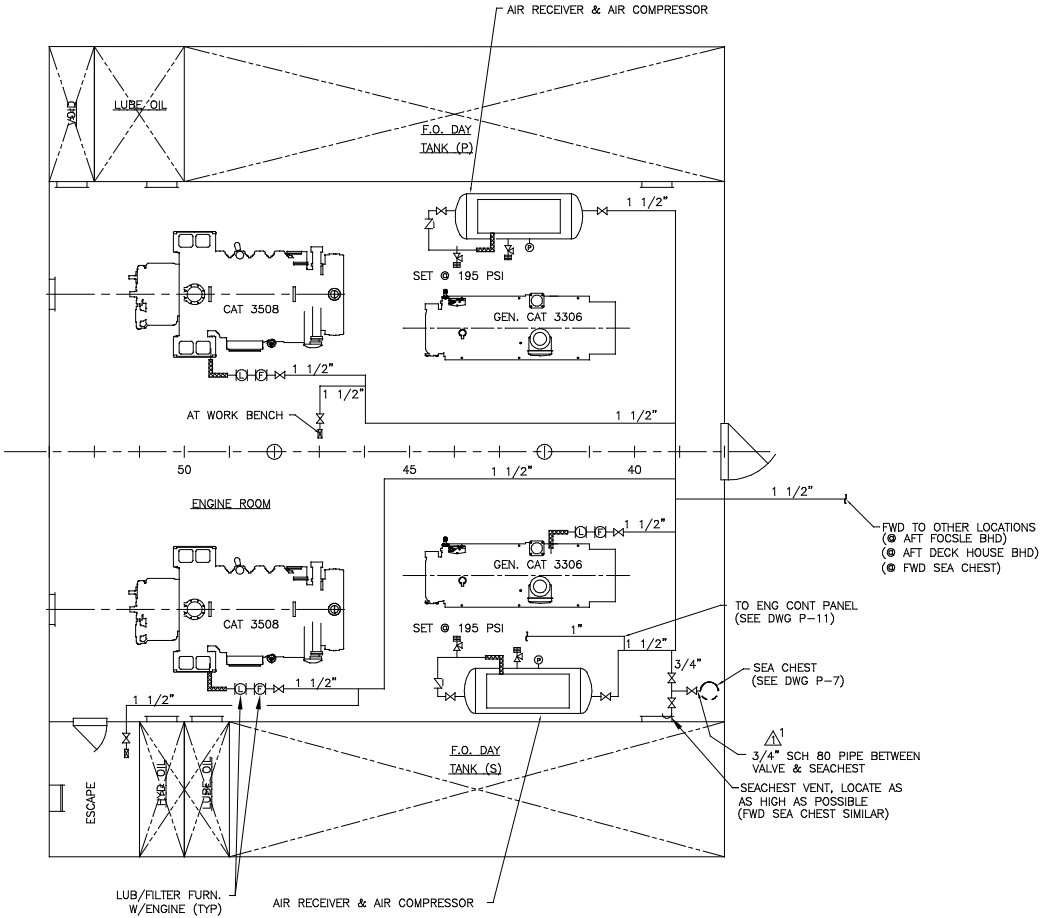


MATERIAL SCHEDULE											
NO.	SYSTEMS	SERVICE	SIZES	PIPE	VALVES			FITTINGS	TAKE-DOWN JOINTS	ASTM SPEC	
					BODIES	TRIM				BOLTS	NUTS
1	COMPRESSED AIR	3/4" TO 1 1/2"	BLK STL ASTM A-53-B SCH 40 & 80	GLOBE BRZ 200# THD ASTM B-61			90° STD WT ASTM A 234 ANSI B16.9	UNION, 300# ASTM A-105 ANSI B16.5			
				1	CHECK BRZ 200# THD ASTM B-61						

EQUIPMENT LIST					
EQUIPMENT	QTY	DESCRIPTION	MATERIAL	MFR	REMARKS
AIR RECEIVER	2	120 GALLON ASME/ABS		MANCHESTER	200 PSI W.P.
AIR COMP.	2	5 HP		QUINCY	MODEL 325
HOSE		WP 250PSI BURST 1000PSI		WEATHERHEAD	H-166 SAE J 1942

SYMBOL LIST	
SYMBOL	DESCRIPTION
	VALVE, GLOBE
	VALVE, CHECK
	HOSE
	GAUGE, PRESSURE
	VALVE, PRESSURE RELIEF SET @ 165 PSI
	QUICK DISCONNECT FITTING



COMPRESSED AIR DIAGRAM

GENERAL NOTES

1. FILTER/LUBICATOR TO BE FURNISHED WITH ALL ENGINES AIR STARTED.
2. NUTS & BOLTING TO BE ASTM A-307 STEEL, GRADE A, ANSI B18.2.1
3. GASKET MATERIAL TO BE NEOPRENE CLOTH-INSERTED.
4. FLEXIBLE HOSES SHALL HAVE A BURST PRESSURE OF NOT LESS THAN 4 TIMES THE MAX. WORKING PRESSURE.
5. THIS DRAWING REPRESENTS A DIAGRAMMATIC TYPE SYSTEM DESCRIPTION. DO NOT SCALE. SOME EQUIPMENT AND PIPE RUNS MAY BE SHOWN OUT OF PLACE TO ALLOW ALL SYSTEM COMPONENTS TO BE CLEARLY SHOWN.
6. SYSTEM OPERATING PRESSURE, 150 PSI. MAIN RELIEF VALVES SET AT 165 PSI.

1	1. ADDED SCH 80 TO MATERIAL SCHEDULE AND DENOTED LOCATION OF SCH 80 PIPE ON DIAGRAM.	1-9-03	CB
REVISIONS			
<b>MASTER BOAT BUILDERS, INC.</b>			
P.O. Box 702		Bayou LaBatre, AL 36509	
150'-0" x 36'-0" x 12'-0"			
OSV			
Drawn By : C. BRAUN	Approved By :	Scale : 3/8"=1'-0"	
Sheet No. 354		Date : 7-2-02	
COMPRESSED AIR SYSTEM DIAGRAM			
Sheet : 1 of 1	Drawing Number :	P-6	Rev. 1