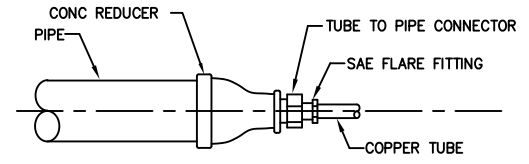


MATERIAL SCHEDULE					
SYSTEMS	SIZES	PIPE	VALVES		TAKE-DOWN JOINTS
			BODIES	TRIM	
1 SHIPS SERVICE & ENGINE STARTING COMPRESSED AIR	3/4" TO 2"	SCH 80 BLK STEEL ASTM A-53, GRADE A OR B, TYPE S ANSI B31.1	300LB BRONZE, FLDG ASTM B-62 ANSI B16.34	BRONZE	3000LB FORGD STL SOCKET WELD, ASTM A-105, GRADE 1 OR 2 ANSI B16.11
	1/2"	SMLS COPPER TUBING, SOFT ANNEALED ASTM B-88	150LB BRONZE ASTM B-61, SCRD ANSI B16.34	BRONZE	BRASS SAE STD 37 DEGREE FLARE

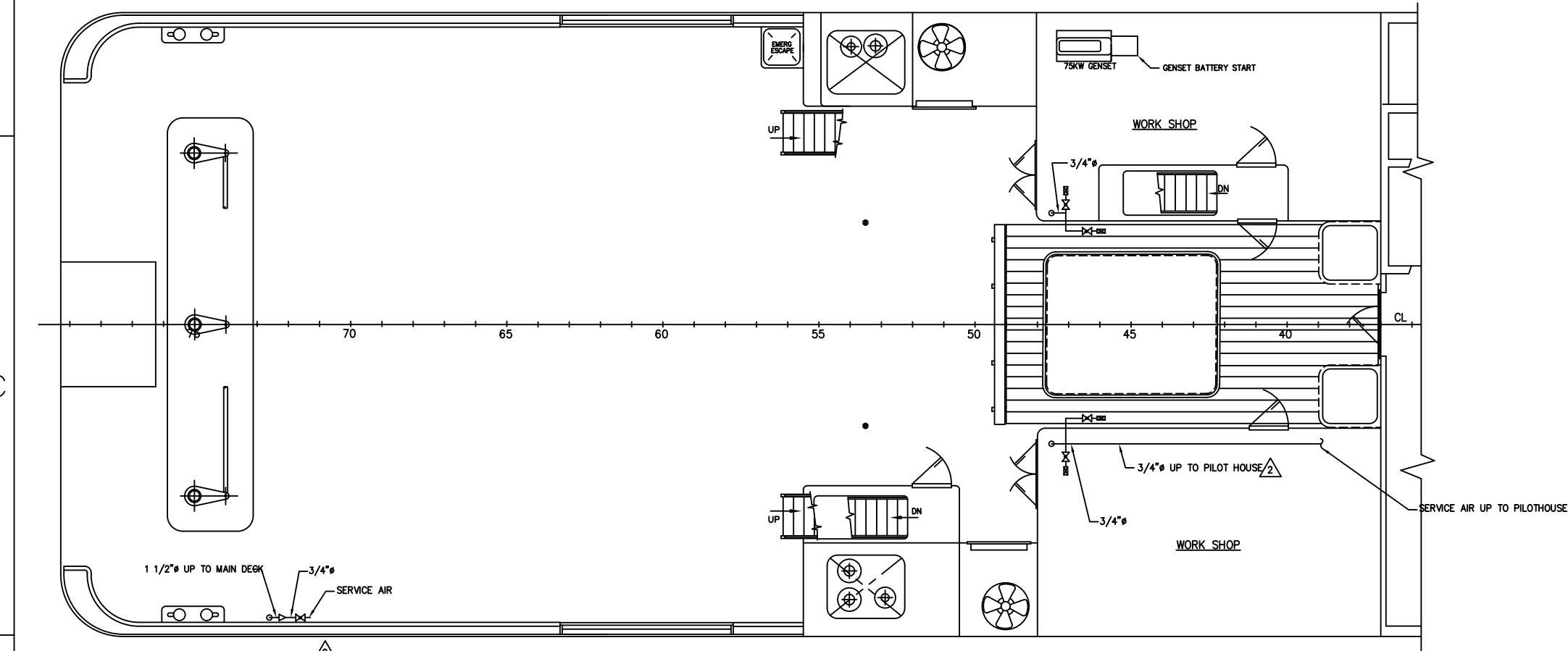
REMARKS
 1. TEST SYSTEMS @ 1 1/2 TIMES THE WORKING PRESSURE.
 2. NUTS AND BOLTING TO BE ASTM A-307 STEEL, GRADE A, ANSI B18.2.1.
 3. GASKET MATERIAL TO BE NEOPRENE CLOTH-INSERTED.
 4. FLEXIBLE HOSES SHALL HAVE A BURST PRESSURE OF NOT LESS THAN 4 TIMES THE MAX. WORKING PRESSURE.
 5. ALL MATERIALS AND COMPONENTS TO COMPLY WITH 46 CFR SUBCHAPTER F VESSEL PIPING REGULATIONS.

EQUIPMENT LIST					
EQUIPMENT	QTY	DESCRIPTION	MATERIAL	MFR	REMARKS
AIR RECEIVER	2	120 GALLON ASME APPROVED		MANCHESTER	VERTICAL MOUNT W/ 165 PSI RELIEF VALVES USCG & ABS APPROVED
AIR COMP.	2	5 HP		QUINCY	MODEL 325 1750 RPM
HOSE		WP 250PSI BURST 1000PSI		WEATHERHEAD	H166

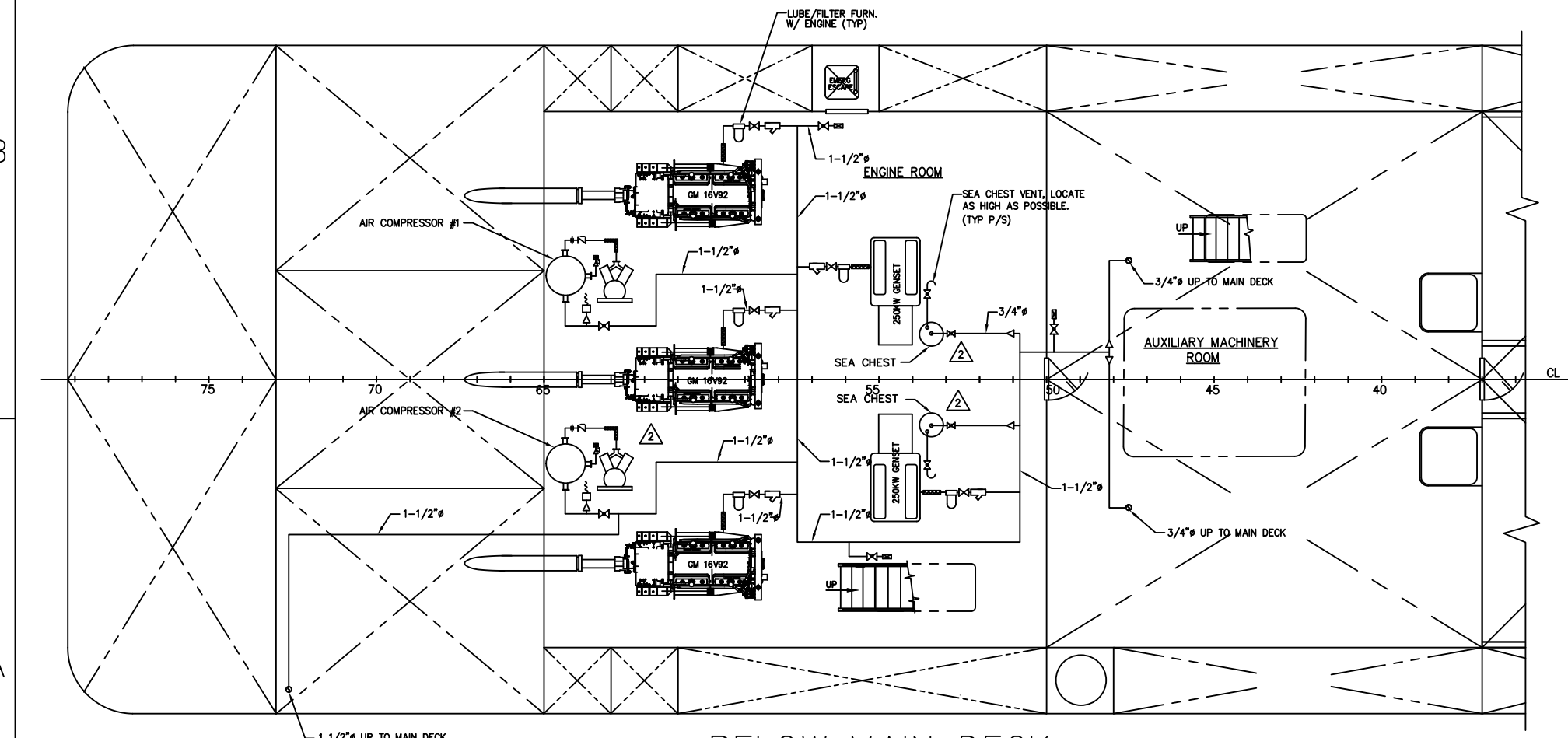
SYMBOL LIST	
SYMBOL	DESCRIPTION
	VALVE, BALL
	VALVE, CHECK - AIR COMPRESSOR
	HOSE
	VALVE, PRESSURE RELIEF SET @ 165 PSI
	QUICK DISCONNECT FITTING
	LUBRICATOR / FILTER
	REDUCER
	WYE TYPE STRAINER
	REGULATOR SWITCH (PRESSURE ACTIVATED)



DETAIL 1
 PIPE TO COPPER TUBE CONNECTION
 NTS



MAIN DECK



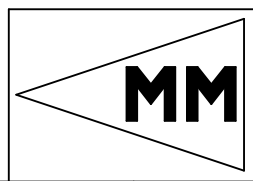
BELOW MAIN DECK

GENERAL NOTES

1. FILTER/LUBRICATOR TO BE FURNISHED WITH ALL ENGINES THAT ARE AIR STARTED.
2. THIS DRAWING REPRESENTS A DIAGRAMMATIC TYPE SYSTEM DESCRIPTION. DO NOT SCALE. SOME EQUIPMENT AND PIPE RUNS MAY BE SHOWN OUT OF PLACE TO ALLOW ALL SYSTEM COMPONENTS TO BE CLEARLY SHOWN.
3. SYSTEM OPERATING PRESSURE, 150 PSI
ALL RELIEF VALVES SET AT 165 PSI.
4. INSTALL 1/4" BLOW DOWN/DRAIN VALVES AT LOW POINTS ON SYSTEM AS REQUIRED.
5. ALL WORKMANSHIP, MATERIALS AND COMPONENTS TO BE USCG APPROVED.

2	ADDED SHIPYARD COMMENTS.	RLP 4/23/99
1	ISSUED FOR CONSTRUCTION.	RLP 3/27/99
NO.	ALTERATIONS	BY/DATE

DRAWN BY:	ROBERT PAYNE	DATE:	3/27/99
CHECKED BY:		DATE:	
APPROVED BY:		DATE:	
APPROVED BY:		DATE:	
SCALE:	NONE	CONTRACT NO.:	S-185-32
This drawing and its contents, specifications and design concept are proprietary information and may not be wholly or partially reproduced, transferred or used for manufacture without written consent from: MARINE MANAGEMENT INCORPORATED OR ROBERT L. PAYNE. Copyright 1997			
DWG. NO.:	S-185-P6		



TITLE: 160'-0"x40'-0"x13'-0" RESEARCH VESSEL
COMPRESSED AIR SYSTEM DIAGRAM

PREPARED FOR: CAMERON OFFSHORE BOATS, INC. CAMERON, LOUISIANA

MARINE MANAGEMENT INC.
 MARINE DESIGNERS AND SURVEYORS

P.O. Box: 1803 Ocean Springs, MS 39566-1803
 Ph: 601-872-2846 Fax: 601-872-3666 Online: rpayne@datataync.com

SHT: 1
 OF: 1
 ALT NO: 2