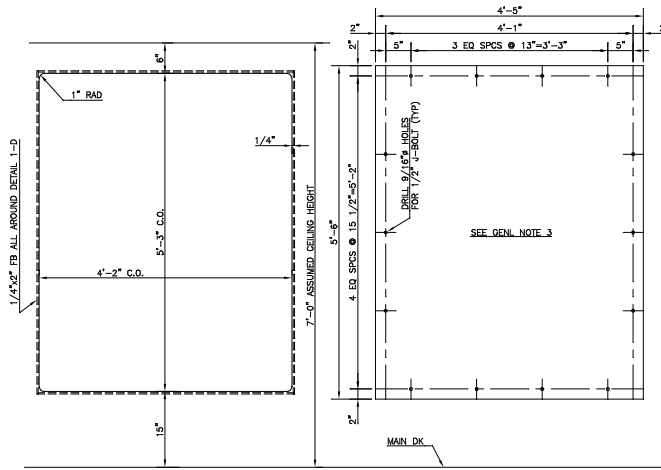
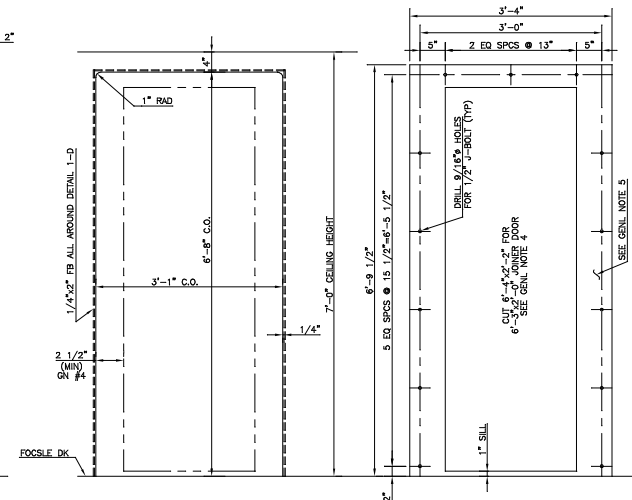


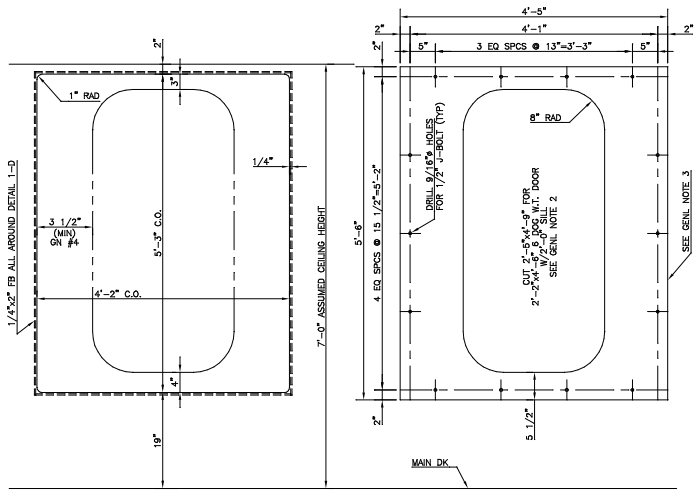
TYPE "C"  
I.O. FOR JOINER DOOR



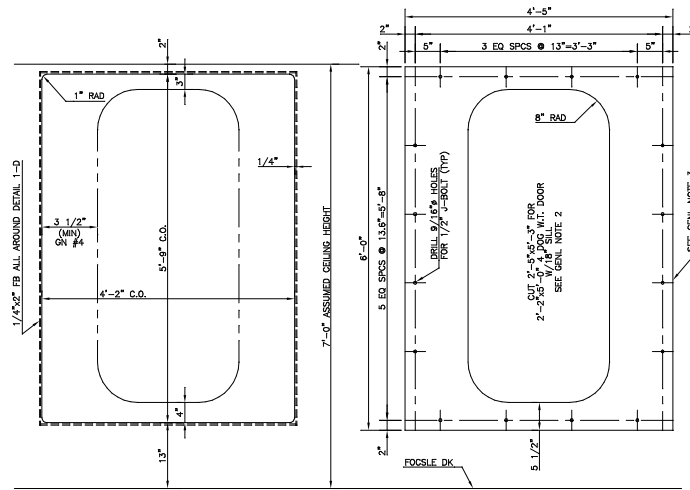
TYPE "D"  
TONNAGE OPENING & COVER PL



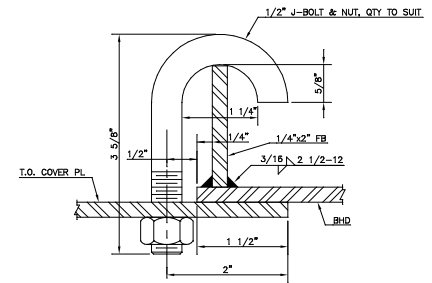
TYPE "E"  
I.O. FOR JOINER DOOR



TYPE "A"  
I.O. W/4'-6" W.T. DOOR W/24" SILL



TYPE "B"  
I.O. W/5'-0" W.T. DOOR W/18" SILL



DETAIL 1-D  
J-BOLT ASSEMBLY  
SCALE: FULL

GENERAL NOTES

1. ALL JOINER DOOR CUTS SIZE FOR MARLITE PRE-HUNG DOOR.
2. SEE STRUCTURE DRAWINGS FOR LOCATION OF TONNAGE OPENINGS AND LOCATION OF DOORS IN I.O.
3. TONNAGE COVER PLATE THICKNESS TO MATCH BULKHEADS TO WHICH IT'S ATTACHED (MIN 1/4" PL).
4. MINIMUM DIMENSION BETWEEN T.O. CUT AND DOOR CUT (EITHER SIDE).
5. INTERIOR TONNAGE COVERS MAY BE CONSTRUCTED OF WOOD.

1	REVISED MIN. THK ON GN 3 PER ABS LTR DTD JULY 25 2002.	1-8-02	C.B.
REV.	DESCRIPTION	DATE	BY
REVISIONS			
<b>MASTER BOAT BUILDERS, INC.</b>			
P.O. Box 702		Bayou LaBatre, AL 36509	
150'-0" x 36'-0" x 12'-0"			
OSV			
Drawn By: CONCAD	Approved By:	Scale: 1"=1'-0"	
Plot No. 354		Date: 5-14-02	
<b>TONNAGE OPENING &amp; COVER PLATE</b>			
Sheet: 1 of 1	Drawing Number:	S-11	Rev: 1