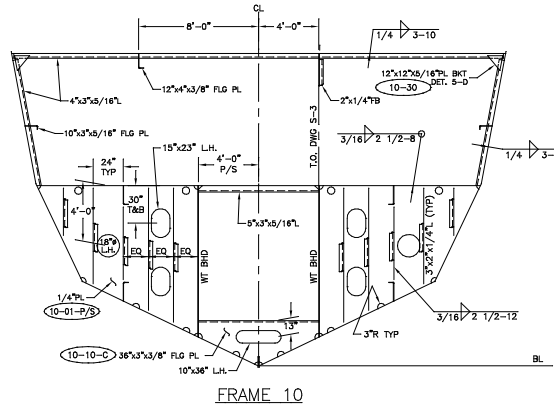
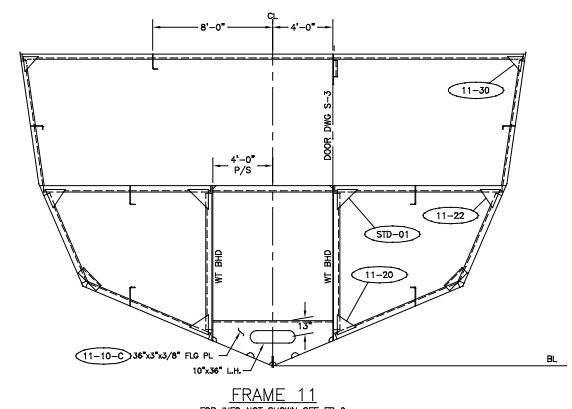


FRAME 9

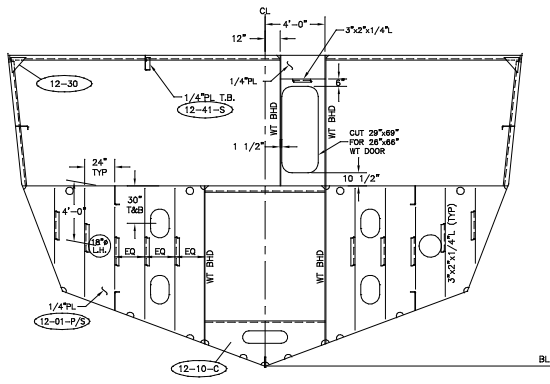


FRAME 10



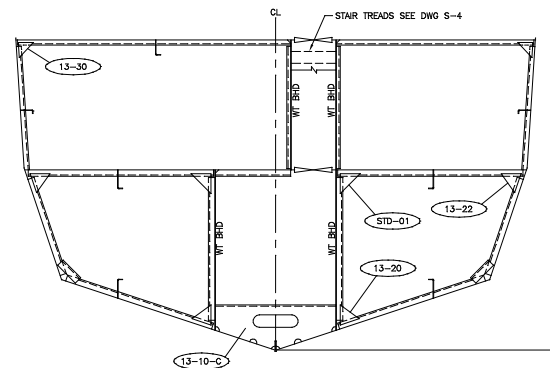
FRAME 11

FOR INFO NOT SHOWN SEE FR 9



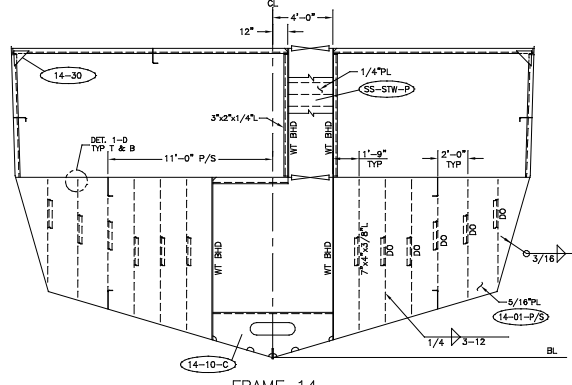
FRAME 12

FOR INFO NOT SHOWN SEE FR 10



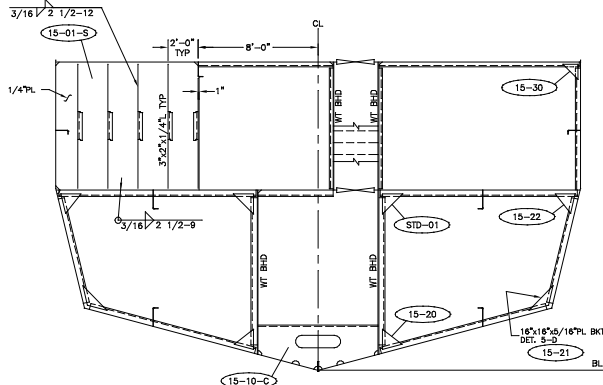
FRAME 13

FOR INFO NOT SHOWN SEE FR 9



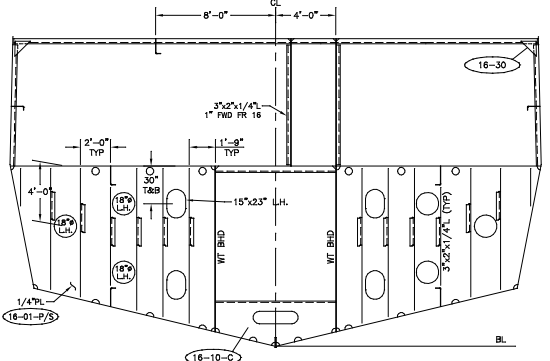
FRAME 14

FOR INFO NOT SHOWN SEE FR 10



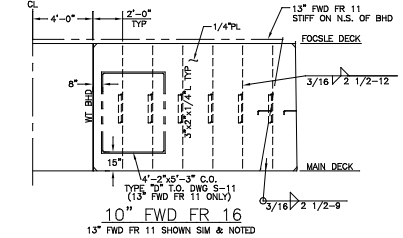
FRAME 15

FOR INFO NOT SHOWN SEE FR 9



FRAME 16

FOR INFO NOT SHOWN SEE FR 10



GENERAL NOTES

1. ALL FRAMES ARE VIEWED LOOKING AFT.
2. ALL FLANGES OF STIFF. OR CHORDS ARE TO BE SNIPED WHEN ENDS CONNECT TO BHDS, DECKS OR SHELL.
3. ALL SHIPS TO BE 1/2"x1 1/2" UNLESS NOTED OTHERWISE.
4. ALL VENT DRAIN HOLES TO BE 3" RADIUS.
5. FOR REFERENCE TO STRUCTURAL DETAILS SEE DRAWING S-10.
6. MAIN DECK DESIGNED FOR 200LBS/FT² LOADING FROM FRAME 24 FWD AND 340LBS/FT² FROM FRAME 24 AFT.
7. UNBRACKETED STIFFENERS OF SHELL, WT OR OT BHDS AND HOUSE FRONTS ARE TO HAVE DOUBLE CONTINUOUS WELDS FOR 1/10 OF THEIR LENGTH AT EACH END.
8. UNBRACKETED STIFFENERS OF NONTIGHT STRUCTURAL BHDS, DK HOUSE SIDES AND AFTER ENDS ARE TO HAVE A PAIR OF MATCHED INTERMITTENT WELDS AT EACH END.
9. ALL LIGHTING HOLES ARE CENTERED BETWEEN FRAMES UNLESS NOTED OTHERWISE.

REV.	DESCRIPTION	DATE	BY
REVISIONS			
MASTER BOAT BUILDERS, INC.			
P.O. Box 702		Boyau LaBatre, AL 36509	
150'-0" x 36'-0" x 12'-0"			
OSV			
Drawn By: C. BRAUN	Approved By:	Scale: 1/4"=1'-0"	
Full No. 354		Date: 5-28-02	
FRAMES 9 THRU 16			
Sheet: 1 of 1	Drawing Number:	S-2A	Rev: 0