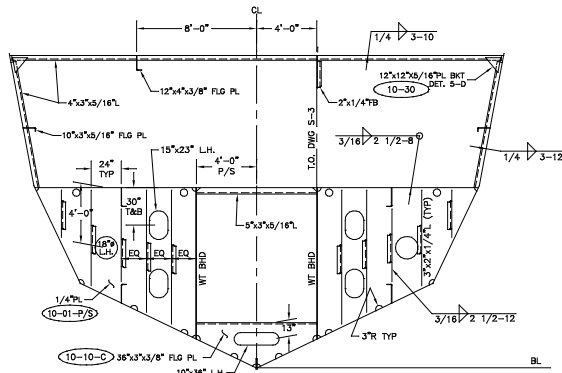
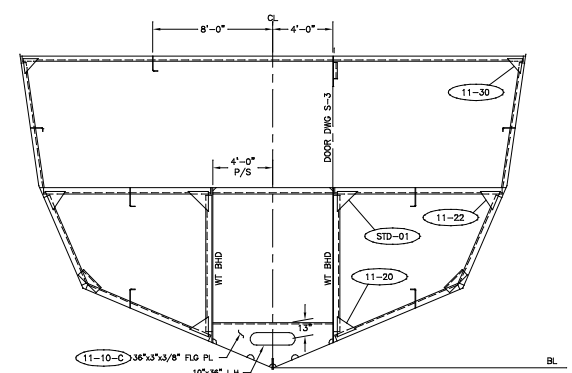


FRAME 9

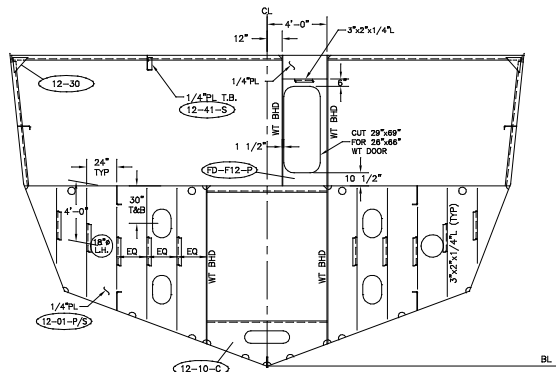


FRAME 10



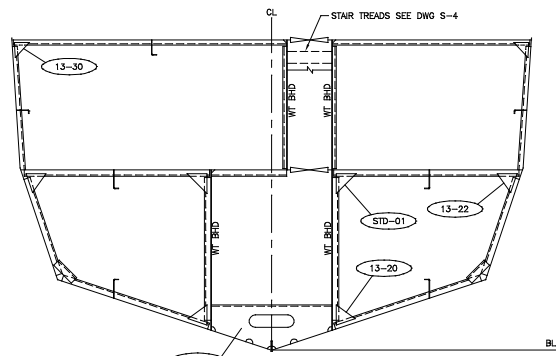
FRAME 11

FOR INFO NOT SHOWN SEE FR 9



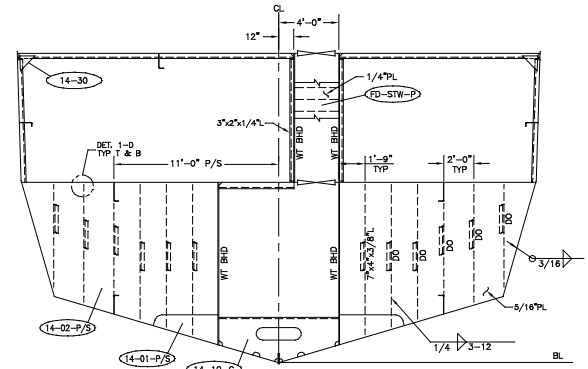
FRAME 12

FOR INFO NOT SHOWN SEE FR 10



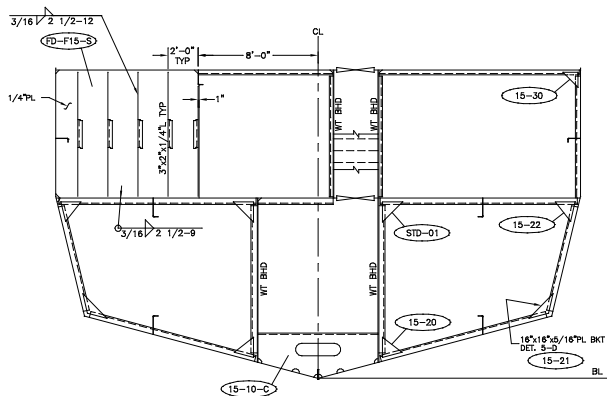
FRAME 13

FOR INFO NOT SHOWN SEE FR 9



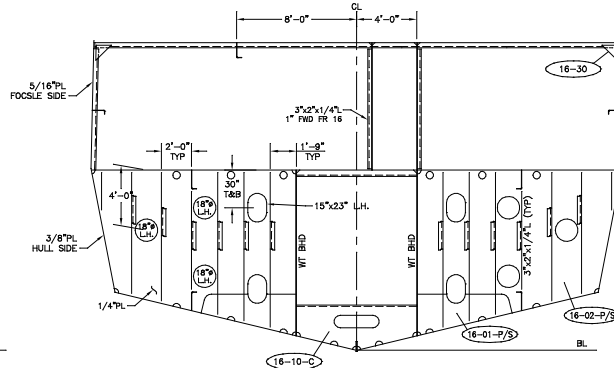
FRAME 14

FOR INFO NOT SHOWN SEE FR 10



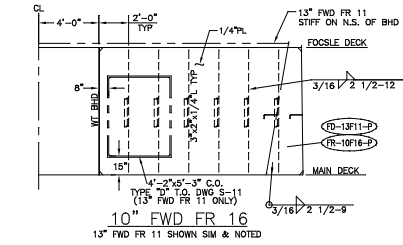
FRAME 15

FOR INFO NOT SHOWN SEE FR 9



FRAME 16

FOR INFO NOT SHOWN SEE FR 10



GENERAL NOTES

1. ALL FRAMES ARE VIEWED LOOKING AFT.
2. ALL FLANGES OF STIFF. OR CHORDS ARE TO BE SNIPPED WHEN ENDS CONNECT TO BHDS, DECKS OR SHELL.
3. ALL SHIPS TO BE 1/2" x 1/2" UNLESS NOTED OTHERWISE.
4. ALL VENT DRAIN HOLES TO BE 3" RADIUS.
5. FOR REFERENCE TO STRUCTURAL DETAILS SEE DRAWING S-10.
6. MAIN DECK DESIGNED FOR 200LBS/FT² LOADING FROM FRAME 24 AFT.
7. UNBRACKETED STIFFENERS OF SHELL, WT OR OT BHDS AND HOUSE FRONTS ARE TO HAVE DOUBLE CONTINUOUS WELDS FOR 1/10 OF THEIR LENGTH AT EACH END.
8. UNBRACKETED STIFFENERS OF NONTIGHT STRUCTURAL BHDS, DK HOUSE SIDES AND AFTER ENDS ARE TO HAVE A PAIR OF MATCHED INTERMITTENT WELDS AT EACH END.
9. ALL LIGHTING HOLES ARE CENTERED BETWEEN FRAMES UNLESS NOTED OTHERWISE.

REV.	DESCRIPTION	DATE	BY
1	CORRECTED LOFTED PIECE MARKS THROUGHOUT.	1-8-03	CB
REVISIONS			
MASTER BOAT BUILDERS, INC.			
P.O. Box 702 Boyou LaBatre, AL 36509			
150'-0" x 36'-0" x 12'-0"			
OSV			
Drawn By: C. BRAUN		Approved By:	
Full No. 354		Scale: 1/4" = 1'-0"	
		Date: 5-28-02	
FRAMES 9 THRU 16			
Sheet: 1 of 1	Drawing Number:		S-2A
Contract No.			1