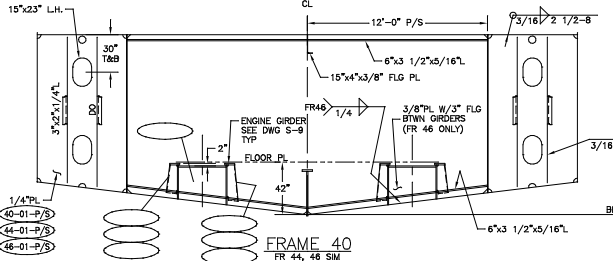
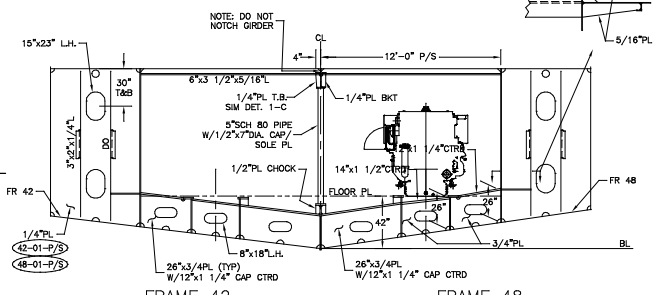


FRAME 39
FR 41, 43, 45 & 47 SIM

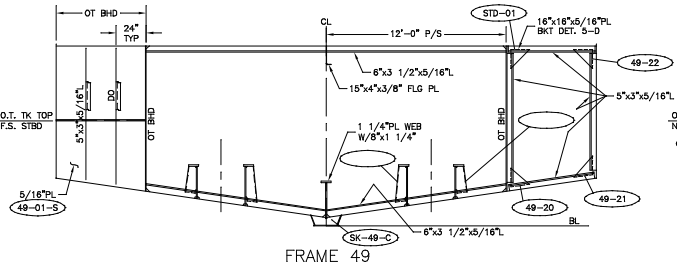


FRAME 40
FR 44, 46 SIM

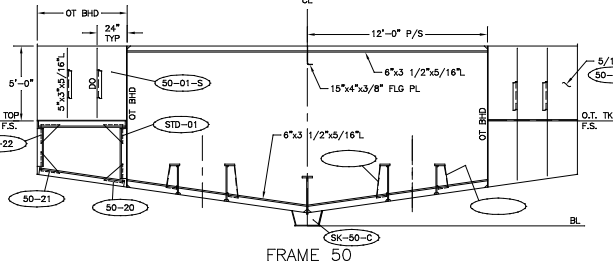


FRAME 42

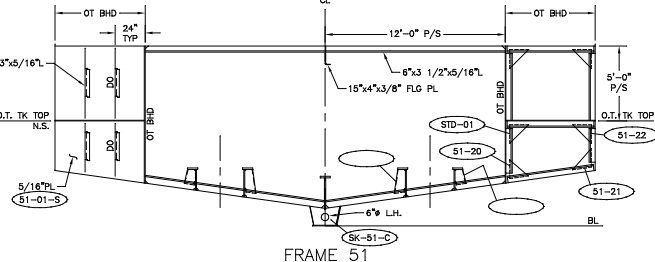
FRAME 48



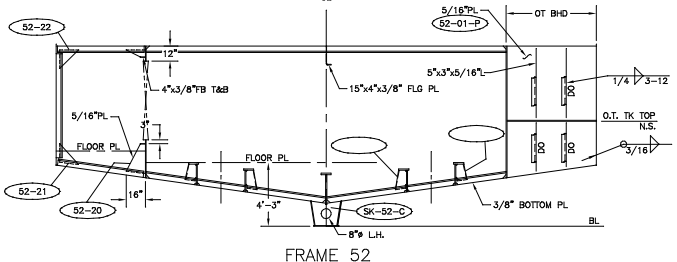
FRAME 49



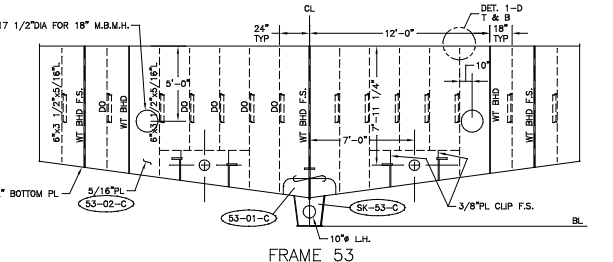
FRAME 50



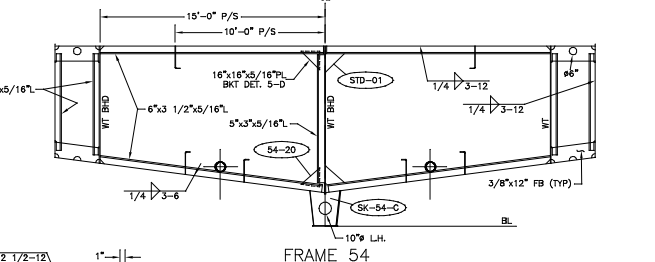
FRAME 51



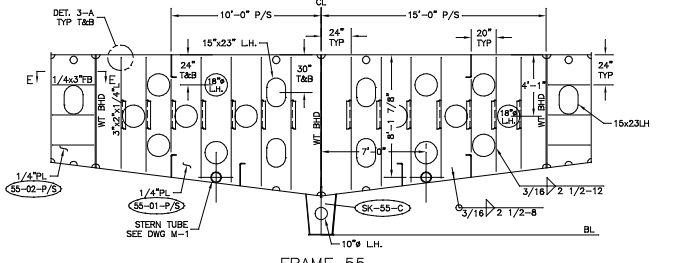
FRAME 52



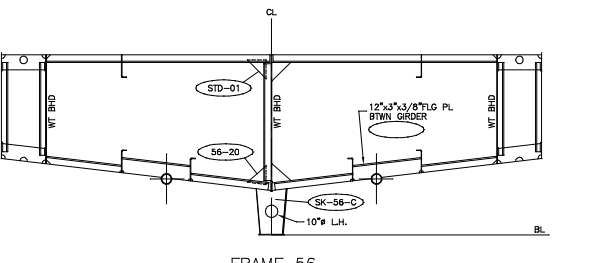
FRAME 53



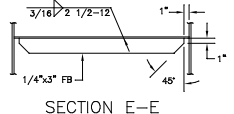
FRAME 54



FRAME 55



FRAME 56
FOR INFO NOT SHOWN SEE FR 54



SECTION E-E

GENERAL NOTES

1. ALL FRAMES ARE VIEWED LOOKING AFT.
2. ALL FLANGES OF STIFF OR GRIDERS ARE TO BE SNIPPED WHEN ENDS CONNECT TO BHDS, DECKS OR SHELL.
3. ALL SNIPES TO BE 1/2\"/>

REV.	DESCRIPTION	DATE	BY
REVISIONS			
MASTER BOAT BUILDERS, INC.			
P.O. Box 702 Boyou LaBatre, AL 36509			
150'-0" x 36'-0" x 12'-0"			
OSV			
Drawn by: C. BRAUN		Approved by:	
Full No. 354		Scale: 1/4"=1'-0"	
FRAMES 39 THRU 56			
Sheet: 1 of 1		Drawing Number: S-2D	