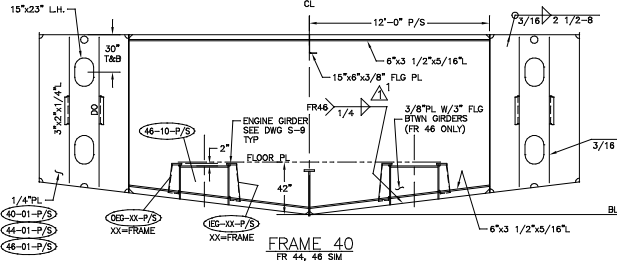
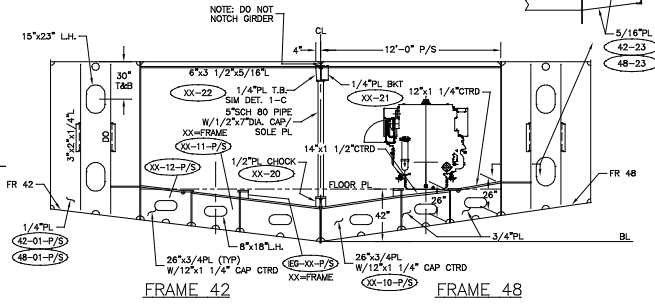


FRAME 39
FR 41, 43, 45 & 47 SIM

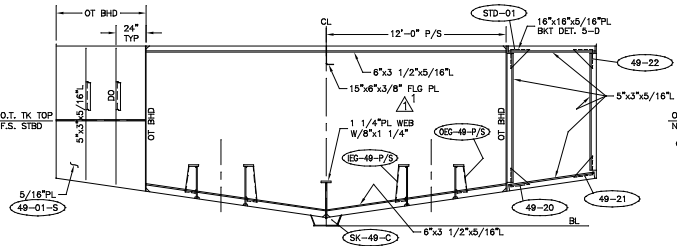


FRAME 40
FR 44, 46 SIM

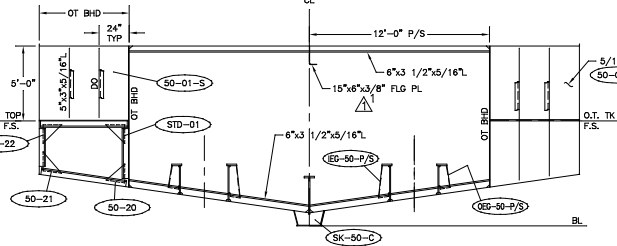


FRAME 42

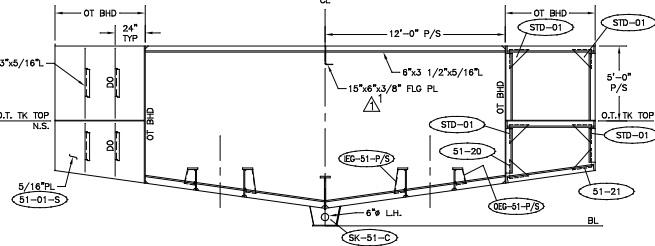
FRAME 48



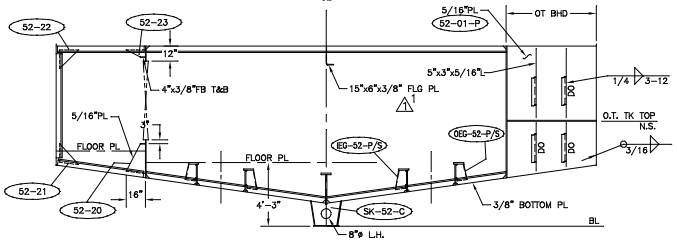
FRAME 49



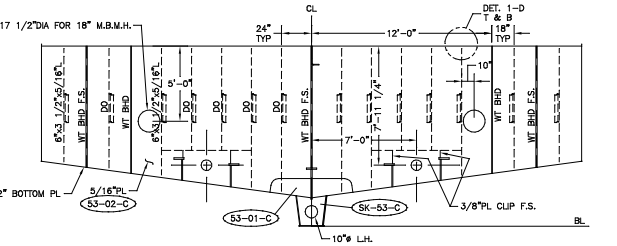
FRAME 50



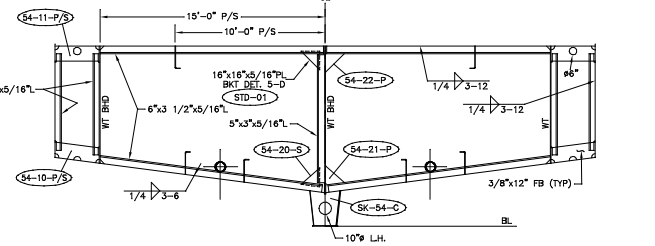
FRAME 51



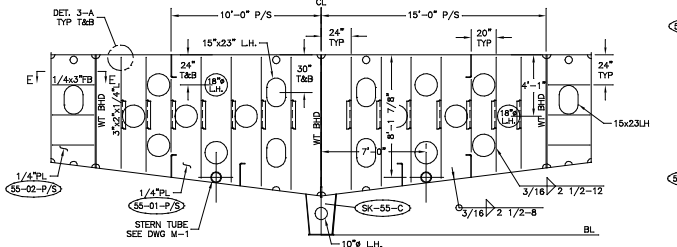
FRAME 52



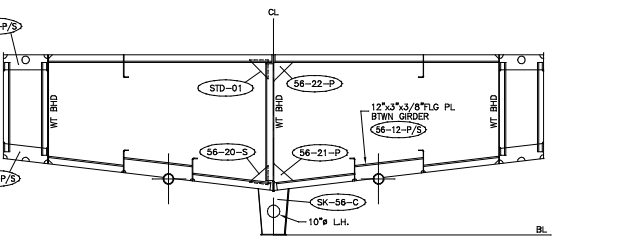
FRAME 53



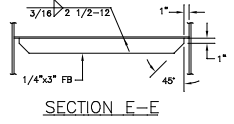
FRAME 54



FRAME 55



FRAME 56
FOR INFO NOT SHOWN SEE FR 54



SECTION E-E

GENERAL NOTES

1. ALL FRAMES ARE VIEWED LOOKING AFT.
2. ALL FLANGES OF STEEL OR GRIDDERS ARE TO BE SNIPPED WHEN ENDS CONNECT TO BHDS, DECKS OR SHELL.
3. ALL SNIPES TO BE 1/2\"/>

1. CHANGED SIZE OF FLG PL ON CL FR 38-53 & ADDED TRIPPING BRACKET AT FR 46.		1-8-02	CB
2. ADDED LOFTED PIECE WARPS THROUGHOUT.			
MASTER BOAT BUILDERS, INC. P.O. Box 702 Boyou LaBatre, AL 36509 150'-0" x 36'-0" x 12'-0" OSV			
Drawn By: C. BRAUN	Approved By:	Scale: 1/4"=1'-0"	
Full No: 354		Date: 5-24-02	
FRAMES 39 THRU 56			
Sheet: 1 of 1	Drawing Number:	S-2D	Rev: 1