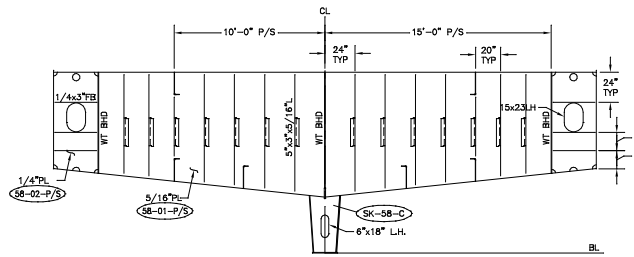
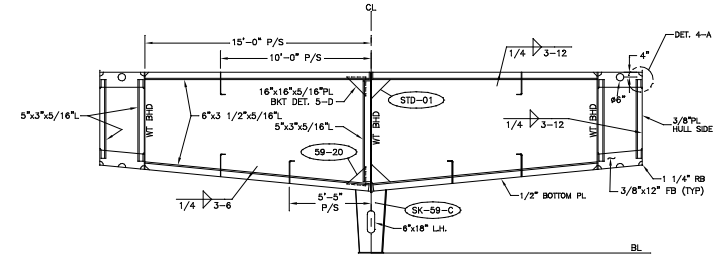


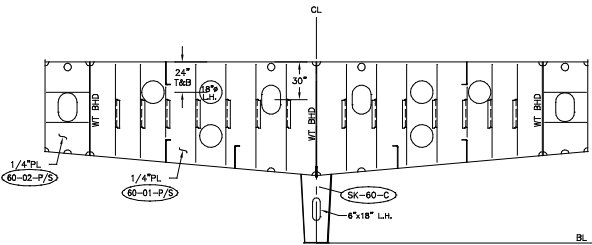
FRAME 57



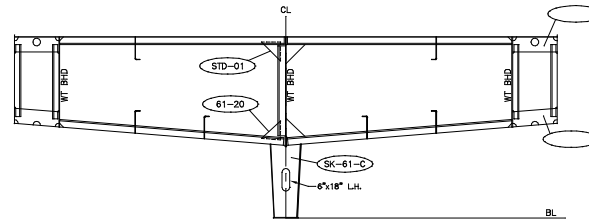
FRAME 58



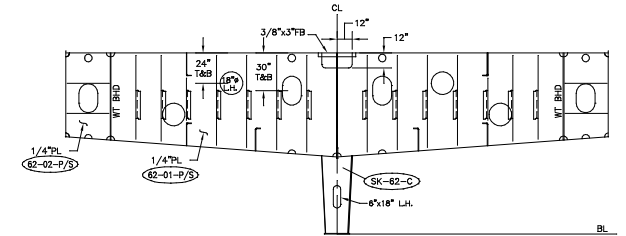
FRAME 59



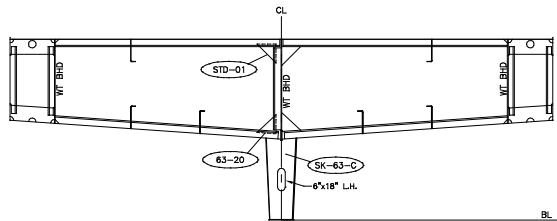
FRAME 60
FOR INFO NOT SHOWN SEE FRAME 57



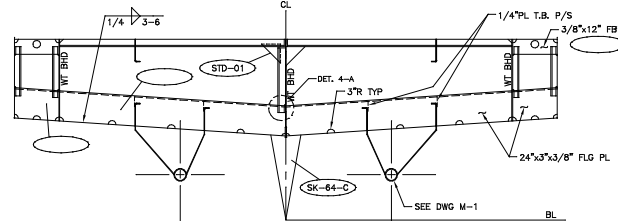
FRAME 61
FOR INFO NOT SHOWN SEE FRAME 59



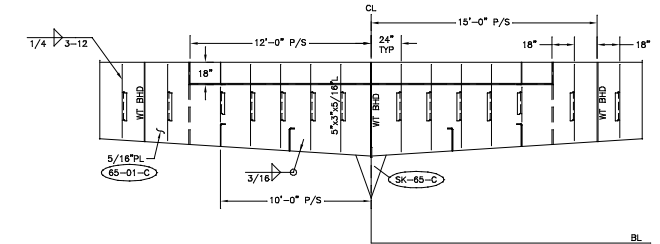
FRAME 62
FOR INFO NOT SHOWN SEE FRAME 57



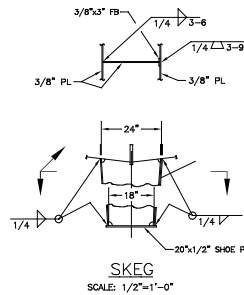
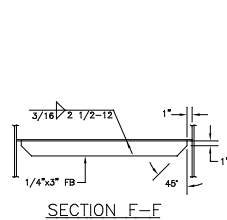
FRAME 63
FOR INFO NOT SHOWN SEE FRAME 59



FRAME 64
FOR INFO NOT SHOWN SEE FRAME 59



FRAME 65



GENERAL NOTES

1. ALL FRAMES ARE VIEWED LOOKING AFT.
2. ALL FLANGES OF STIFFY OR GIRDERS ARE TO BE SNIPPED WHEN ENDS CONNECT TO BHDS, DECKS OR SHELL.
3. ALL SHIPES TO BE 1/2" x 1/2" UNLESS NOTED OTHERWISE.
4. ALL VENT DRAIN HOLES TO BE 3" RADII.
5. FOR REFERENCE TO STRUCTURAL DETAILS SEE DRAWING S-10.
6. MAIN DECK DESIGNED FOR 200LBS/FT² LOADING FROM FRAME 24 FWD AND 540LBS/FT² FROM FRAME 24 AFT.
7. UNBRACKETED STIFFENERS OF SHELL, WT OR OT BHDS AND HOUSE FRONTS ARE TO HAVE DOUBLE CONTINUOUS WELDS FOR 1/10 OF THEIR LENGTH AT EACH END.
8. UNBRACKETED STIFFENERS OF NONRIGHT STRUCTURAL BHDS, DK HOUSE SIDES AND AFTER ENDS ARE TO HAVE A PAIR OF MATCHED INTERMITTENT WELDS AT EACH END.
9. ALL LIGHTING HOLES ARE CENTERED BETWEEN FRAMES UNLESS NOTED OTHERWISE.

REV.	DESCRIPTION	DATE	BY
REVISIONS			
MASTER BOAT BUILDERS, INC.			
P.O. Box 702		Bayou LaBatre, AL 36509	
150'-0" x 36'-0" x 12'-0"			
OSV			
Drawn By : C. BRAUN	Approved By :	Scale : 1/4" = 1'-0"	
File No. 354	Date : 5-21-02		
FRAMES 57 THRU 65			
Sheet : 1 of 1	Drawing Number :	S-2E	Rev. 0