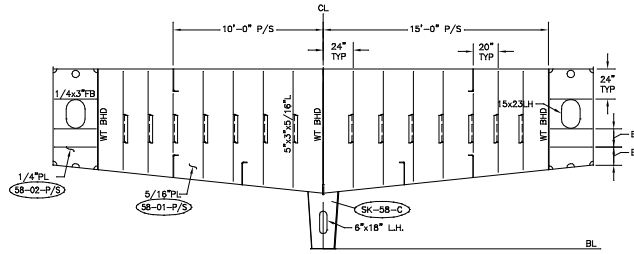
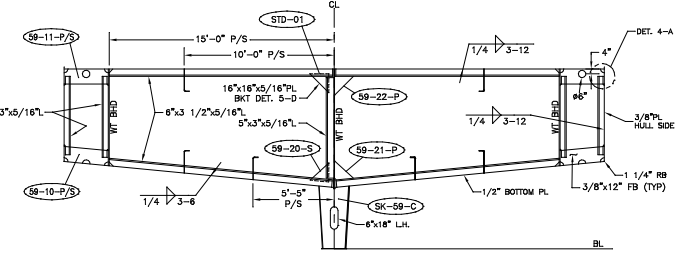


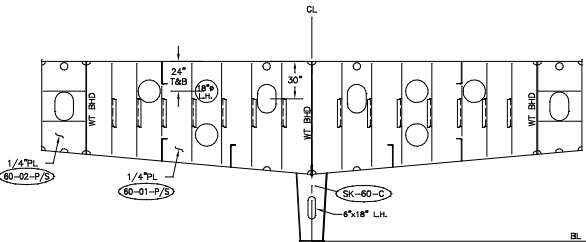
FRAME 57



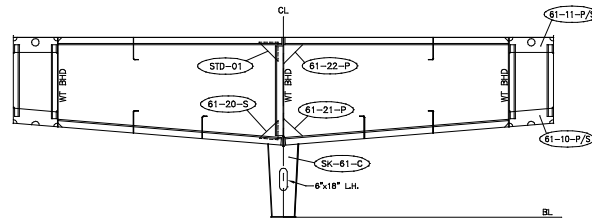
FRAME 58
WT BHD



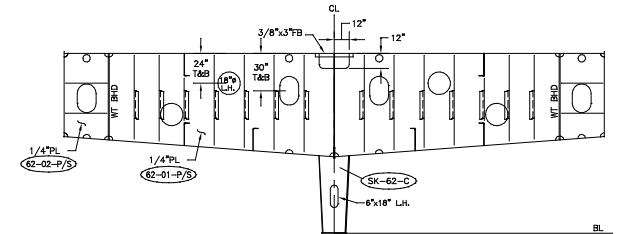
FRAME 59



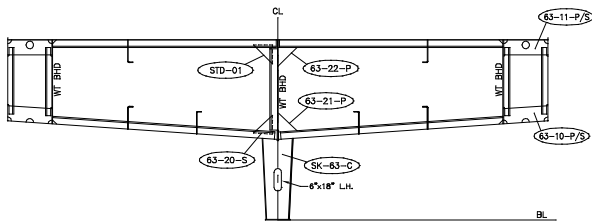
FRAME 60
FOR INFO NOT SHOWN SEE FRAME 57



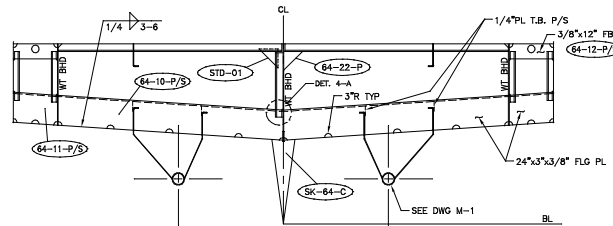
FRAME 61
FOR INFO NOT SHOWN SEE FRAME 59



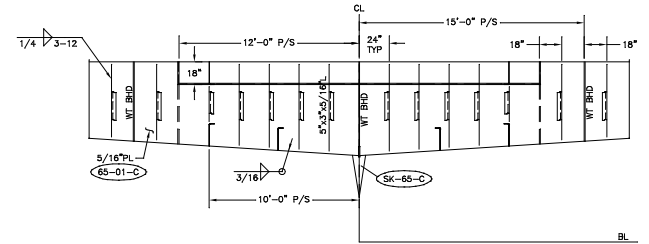
FRAME 62
FOR INFO NOT SHOWN SEE FRAME 57



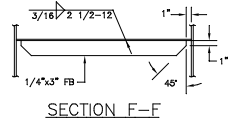
FRAME 63
FOR INFO NOT SHOWN SEE FRAME 59



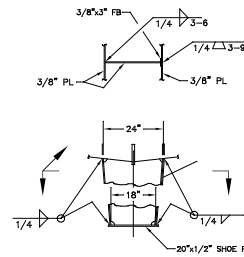
FRAME 64
FOR INFO NOT SHOWN SEE FRAME 59



FRAME 65
WT BHD



SECTION F-F



SKEG

SCALE: 1/2"=1'-0"

GENERAL NOTES

1. ALL FRAMES ARE VIEWED LOOKING AFT.
2. ALL FLANGES OF STIFF OR GRIDDERS ARE TO BE SNIPPED WHEN ENDS CONNECT TO BHDS, DECKS OR SHELL.
3. ALL SNIPES TO BE 1/2"x1 1/2" UNLESS NOTED OTHERWISE.
4. ALL VENT DRAIN HOLES TO BE 3" RADII.
5. FOR REFERENCE TO STRUCTURAL DETAILS SEE DRAWING S-10.
6. MAIN DECK DESIGNED FOR 200LBS/FT² LOADING FROM FRAME 24 FWD AND 540LBS/FT² FROM FRAME 24 AFT.
7. UNBRACKETED STIFFENERS OF SHELL, WT OR QT BHDS AND HOUSE FRONTS ARE TO HAVE DOUBLE CONTINUOUS WELDS FOR 1/10 OF THEIR LENGTH AT EACH END.
8. UNBRACKETED STIFFENERS OF NIGHTIGHT STRUCTURAL BHDS, DK HOUSE SIDES AND AFTER ENDS ARE TO HAVE A PAIR OF MATCHED INTERMITTENT WELDS AT EACH END.
9. ALL LIGHTING HOLES ARE CENTERED BETWEEN FRAMES UNLESS NOTED OTHERWISE.

REV.	DESCRIPTION	DATE	BY
1	ADDED LOFTED PIECE MARKS THROUGHOUT.	1-8-02	CB
REVISIONS			
MASTER BOAT BUILDERS, INC.			
P.O. Box 702 Boyou LaBatre, AL 36509			
150'-0" x 36'-0" x 12'-0"			
OSV			
Drawn By:	C. BRAUN	Approved By:	
Full No:	354	Scale:	1/4"=1'-0"
FRAMES 57 THRU 65		Date:	5-21-02
Sheet:	1 of 1	Drawing Number:	S-2E
Contract No.			