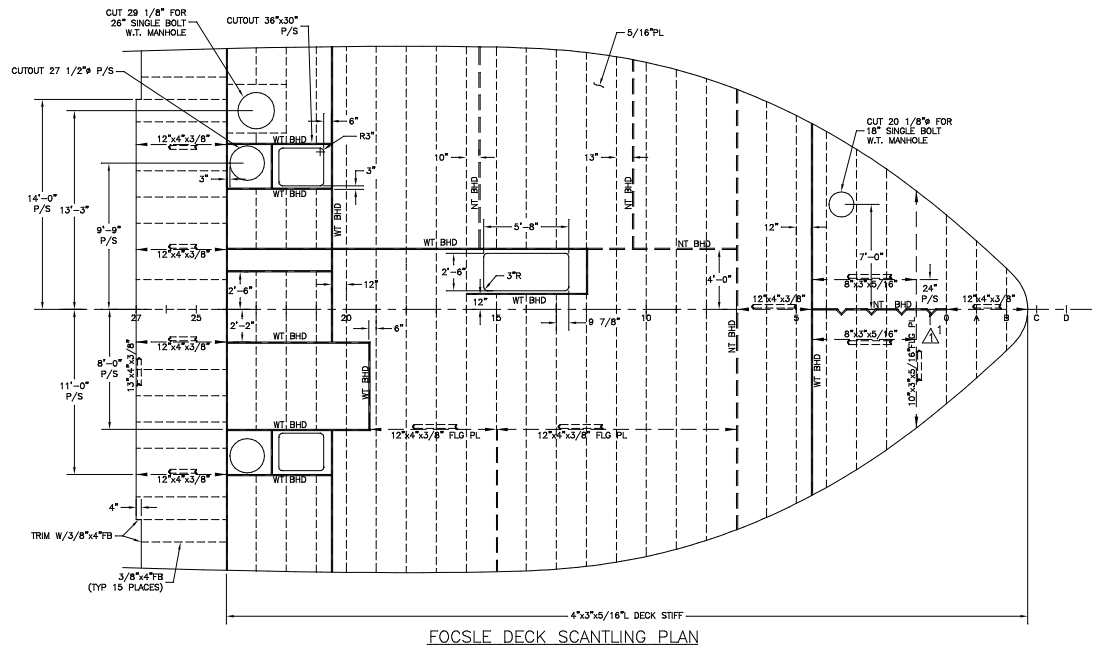
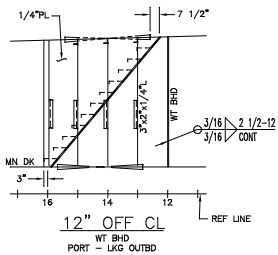


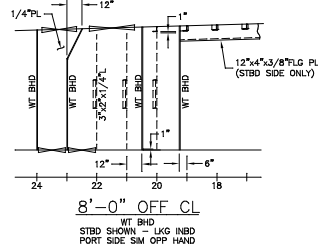
SIDE SHELL STRINGER PLAN
4'-0" ABV MAIN DECK



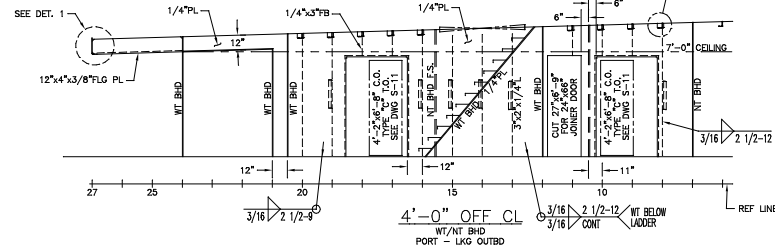
FOCSLE DECK SCANTLING PLAN



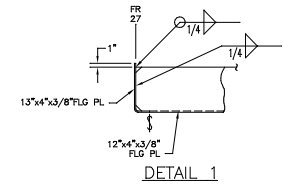
12" OFF CL
WT BHD
PORT - LKG OUTBD



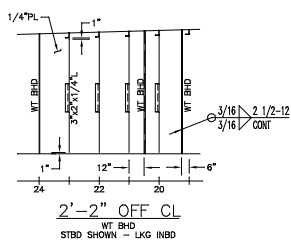
8'-0" OFF CL
WT BHD
STBD SHOWN - LKG INBD
PORT SIDE SIM OPP HAND



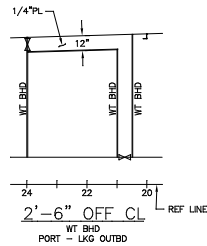
4'-0" OFF CL
PORT - LKG OUTBD



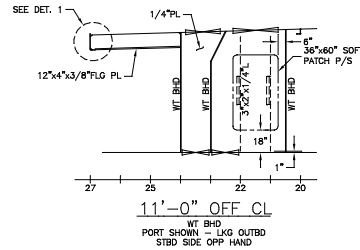
DETAIL 1



2'-2" OFF CL
WT BHD
STBD SHOWN - LKG INBD



2'-6" OFF CL
WT BHD
PORT - LKG OUTBD



11'-0" OFF CL
PORT SHOWN - LKG OUTBD
STBD SIDE OPP HAND

GENERAL NOTES

1. MAIN DECK DESIGNED FOR 200LBS/FT² LOADING FROM FR 24 FWD AND 540LBS/FT² FROM FRAME 24 AFT.
2. VESSEL CERTIFICATION: USCG SUBCHAPTER L, 38 OFF-SHORE WORKERS PLUS CREW WITH ABS FULL OCEAN LOAD LINE, MALTESE CROSS A1, AMS.
3. ALL FLANGES OF STIFF. OR GIRDERS ARE TO BE SNIPED WHEN ENDS CONNECT TO BHDS, DECKS OR SHELL.
4. ALL SNIPES TO BE 1/2"x1/2" UNLESS NOTED.
5. ALL VENT DRAIN HOLES TO BE 3" RADIUS.
6. UNBRACKETED STIFFENERS OF SHELL, WT OR OT BHDS & HOUSE FRONTS ARE TO HAVE DOUBLE CONTINUOUS WELDS FOR 1/10 OF THEIR LENGTH AT EACH END.
7. UNBRACKETED STIFFENERS OF NONTIGHT STRUCTURAL BHDS, DK HOUSE SIDES AND AFTER ENDS ARE TO HAVE A PAIR OF MATCHED INTERMITTENT WELDS AT EACH END.
8. ALL BRACKETS TO BE WELDED DBL. CONT.
9. FOR REFERENCE TO STRUCTURAL DETAILS SEE DWG S-10.
10. VENT OVERFLOW HEIGHTS FOR TANKS ARE AS FOLLOWS:
FR 24 & FND = 17' 1/2" ABV FOCSLE DK.
AFT FR 24 = 30" ABV MAIN DK.
11. LIQUID MUD TANKS DESIGNED FOR 2.0 SPEC. GRAVITY.
MAX. S.G. OF LIQUID = 1.05 ELSEWHERE.

1	ADDED FLANGE PL AT FRAME 1 & AT 24" OFF CL P/S BETWEEN FR 1 & 4 1/2.	9-5-02	CB
REV.	DESCRIPTION	DATE	BY
REVISIONS			
MASTER BOAT BUILDERS, INC.			
P.O. Box 702 Boyou LaBatre, AL 36509			
150'-0" x 36'-0" x 12'-0"			
OSV			
Drawn By: C. BRAUN	Approved By:	Scale: 1/4" = 1'-0"	
Full No: 354		Date: 7-12-02	
FOCSLE DK SCANTLING & STRL BHDS			
Sheet: 1 of 1	Drawing Number:	S-3	Rev: 1