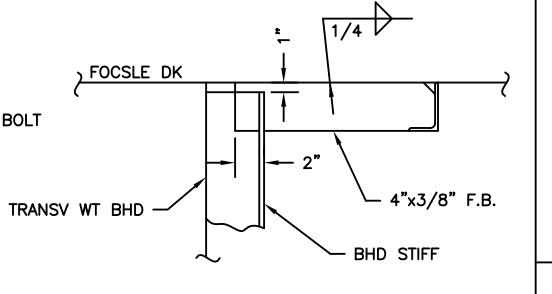


RESERVATIONS

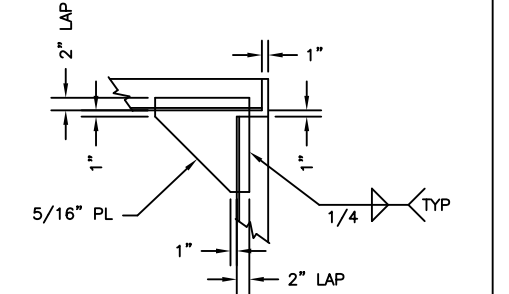
1. RESERVE PENDING VENDOR INFO.
2. RESERVE CUT OUT FOR LOUVER OPENING PENDING DESIGN DEVELOPMENT.

GENERAL NOTES

1. ALL FLANGES OF STIFF. OR GIRDERS ARE TO BE SNIPPED WHEN ENDS CONNECT TO BHDS, DECKS OR SHELL.
2. ALL SNIPES TO BE 1 1/2"x1 1/2" UNLESS NOTED.
3. ALL VENT DRAIN HOLES TO BE 3" RADIUS.
4. UNBRACKETED STIFFENERS OF SHELL, WT OR OT BHDS & HOUSE FRONTS ARE TO HAVE DOUBLE CONTINUOUS WELDS FOR 1/10 OF THEIR LENGTH AT EACH END.
5. UNBRACKETED STIFFENERS OF NONTIGHT STRUCTURAL BHDS, DK HOUSE SIDES AND AFTER ENDS ARE TO HAVE A PAIR OF MATCHED INTERMITTENT WELDS AT EACH END.
6. ALL BRACKETS TO BE WELDED DBL. CONT.
7. ALL FRAMES ARE VIEWED LOOKING AFT.

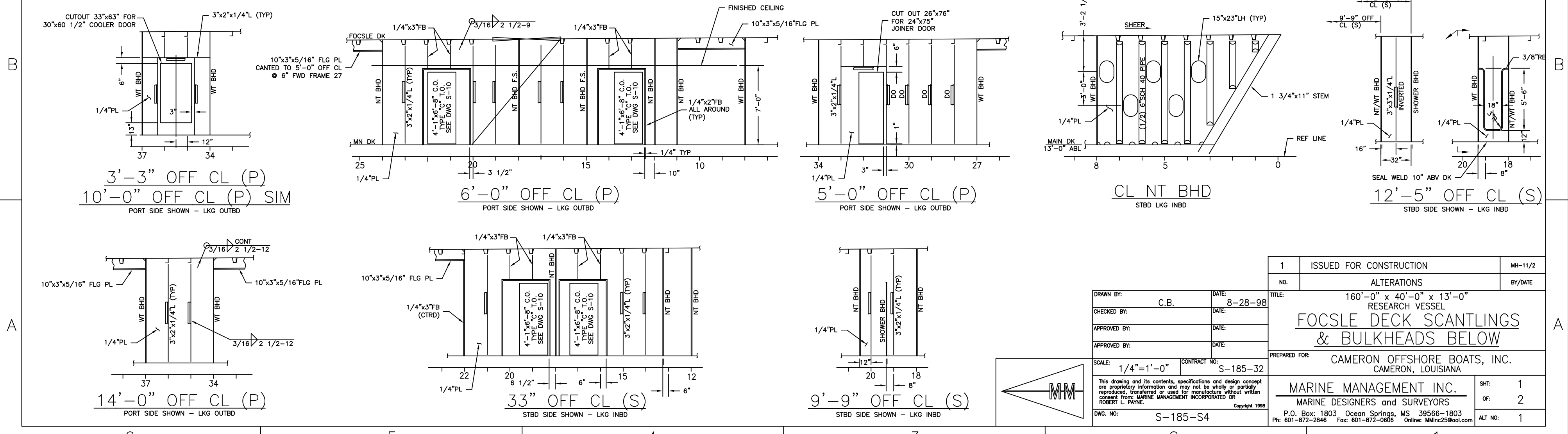


DETAIL 2
WT BHD STIFF BRACKET
SCALE: NONE



DETAIL 1
TYPICAL BRACKET
SCALE: NONE

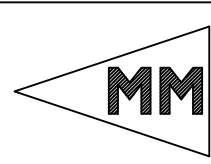
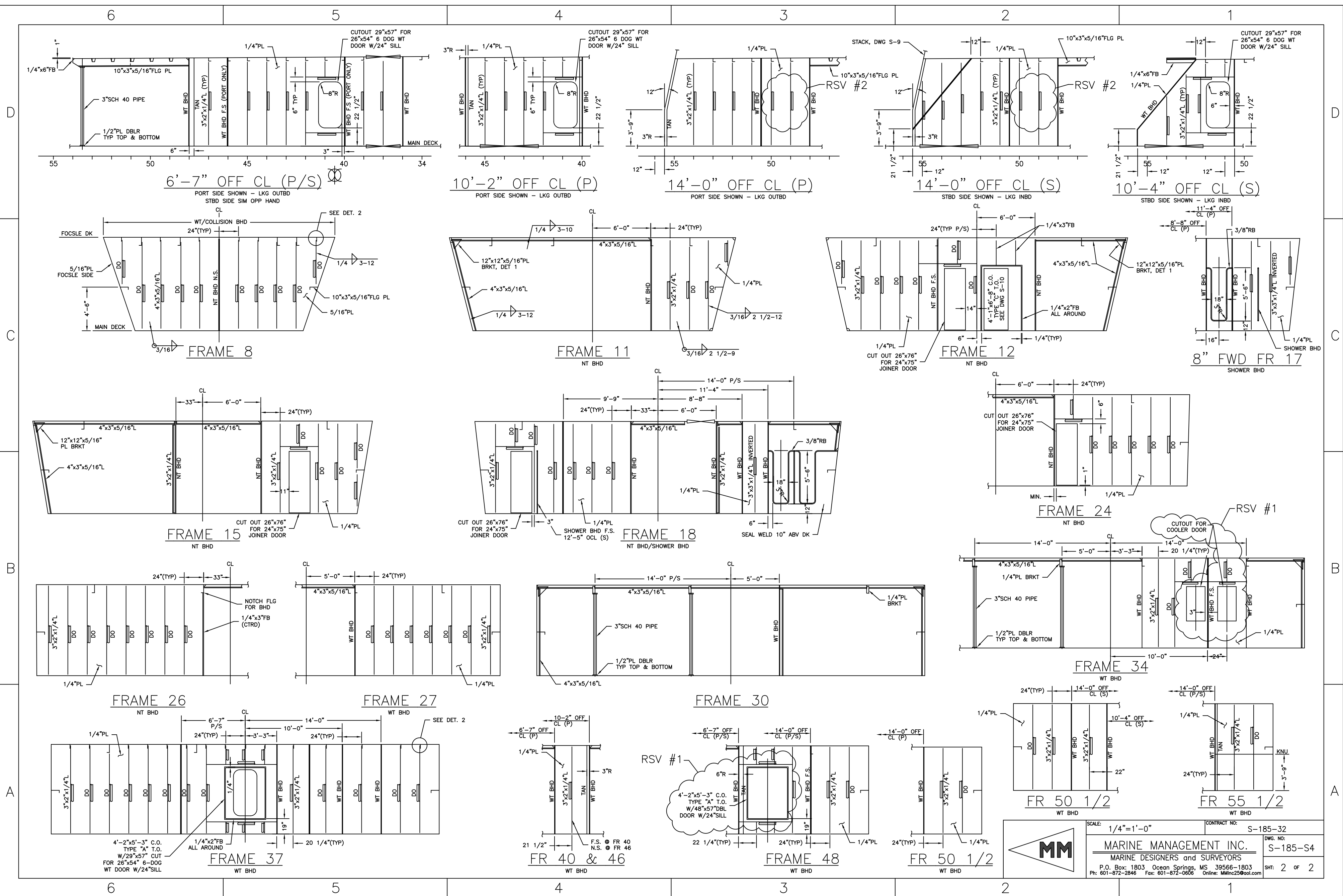
FOCSLE DECK SCANTLINGS



1	ISSUED FOR CONSTRUCTION	MH-11/2
NO.	ALTERATIONS	BY/DATE
TITLE:	160'-0" x 40'-0" x 13'-0" RESEARCH VESSEL	
FOCSLE DECK SCANTLINGS & BULKHEADS BELOW		
PREPARED FOR:	CAMERON OFFSHORE BOATS, INC. CAMERON, LOUISIANA	
MARINE MANAGEMENT INC.		
MARINE DESIGNERS AND SURVEYORS		
P.O. Box: 1803 Ocean Springs, MS 39566-1803	SH: 1	OF: 2
Ph: 601-872-2846 Fax: 601-872-0606 Online: MMinc25@aol.com	ALT No: 1	

DRAWN BY: C.B. DATE: 8-28-98
 CHECKED BY: DATE:
 APPROVED BY: DATE:
 SCALE: 1/4"=1'-0" CONTRACT NO: S-185-32
 This drawing and its contents, specifications and design concept are proprietary information and may not be wholly or partially reproduced, transferred or used for manufacture without written consent from: MARINE MANAGEMENT INCORPORATED OR ROBERT L. PAYNE. Copyright 1998
 DWG. NO: S-185-S4

S-185-S4 REV.1



SCALE: 1/4" = 1'-0"
 CONTRACT NO: S-185-32
 MARINE MANAGEMENT INC.
 MARINE DESIGNERS and SURVEYORS
 P.O. Box: 1803 Ocean Springs, MS 39566-1803
 Ph: 601-872-2846 Fax: 601-872-0606 Online: MMinc25@aol.com
 DWG. NO: S-185-S4
 SH: 2 OF 2

S-185-S4 REV.1