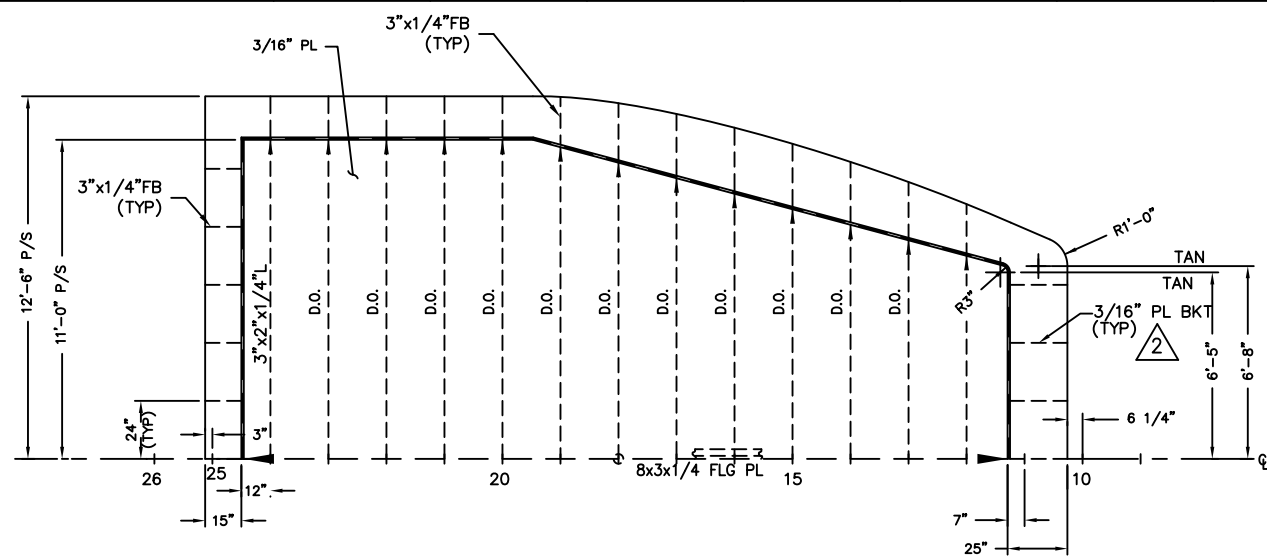
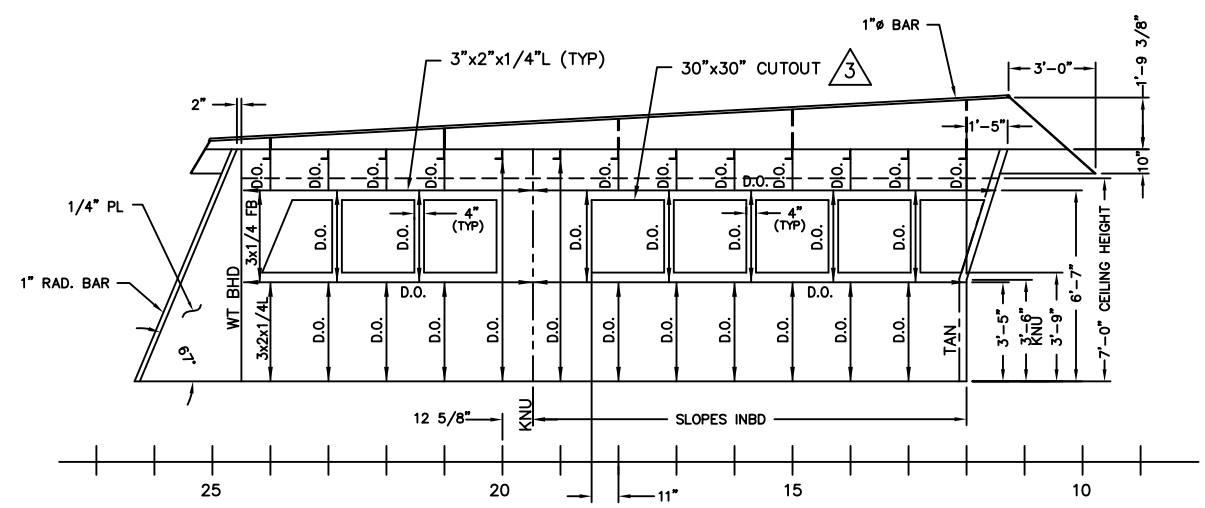


TABLE OF FRAME OFFSETS										
HALF-BREADTHS ABOUT CENTERLINE (FT-IN-1/8TH)										
FRAME	11	12	13	14	15	16	17	18	19	20-25
PILOT HOUSE TOP	7-11-2	8-9-3	9-6-4	10-2-7	10-10-3	11-5-0	11-10-6	12-3-1	12-5-6	12-6-0

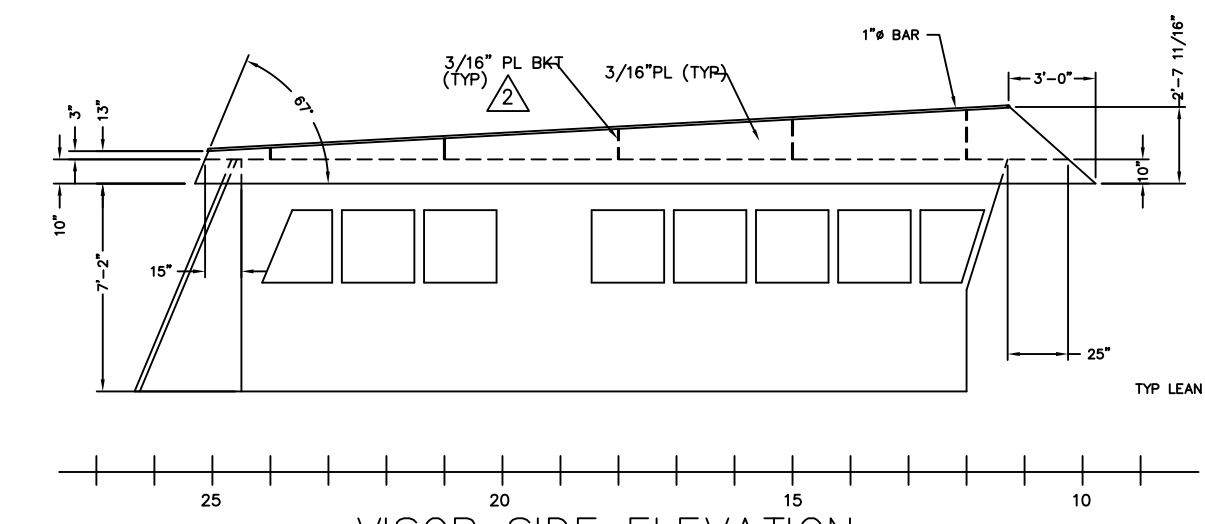


PILOT HOUSE TOP SCANTLINGS

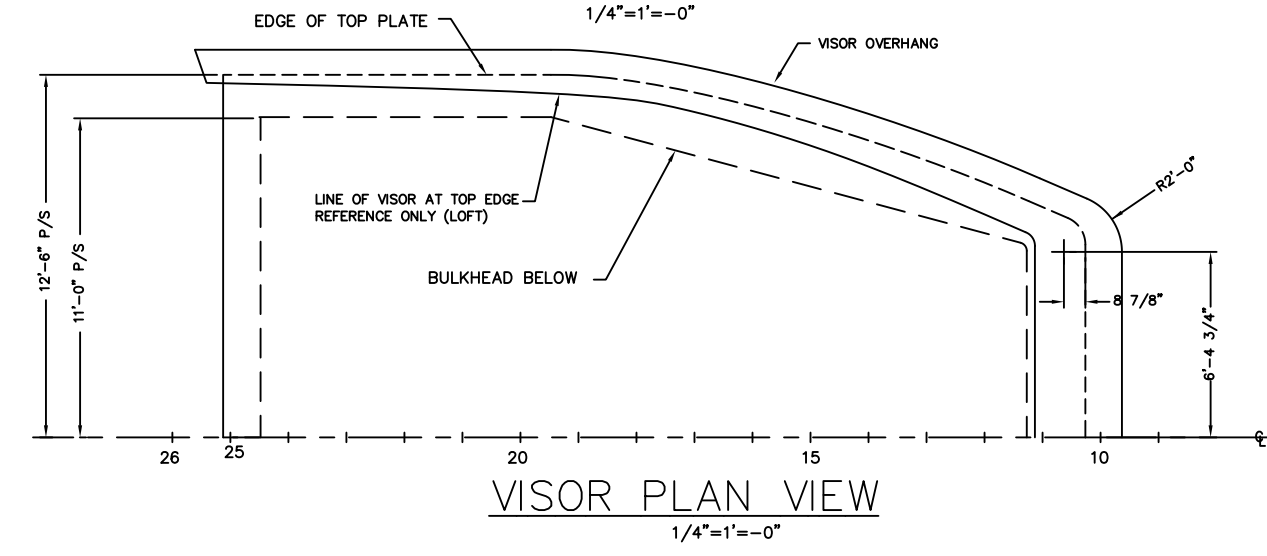


PILOT HOUSE SIDE BHD

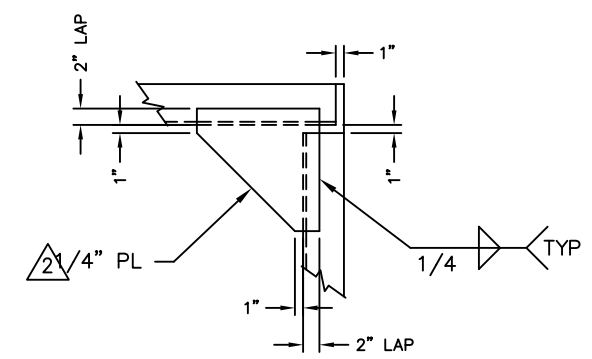
PORT SIDE SHOWN - LOOKING OUTBD
STBD SIDE SIM OPP HAND



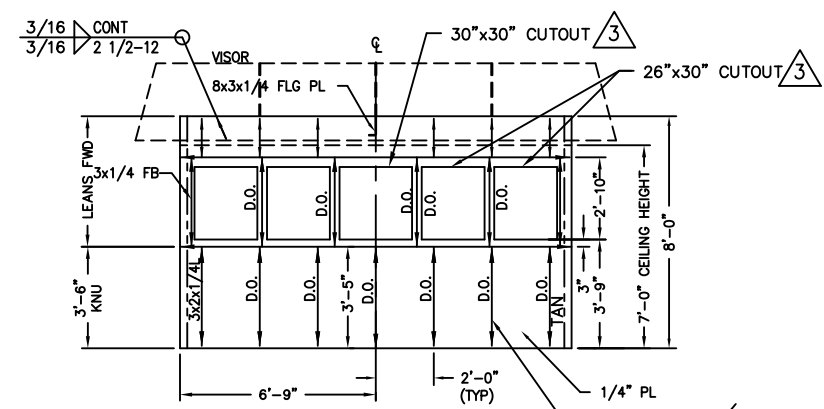
VISOR SIDE ELEVATION



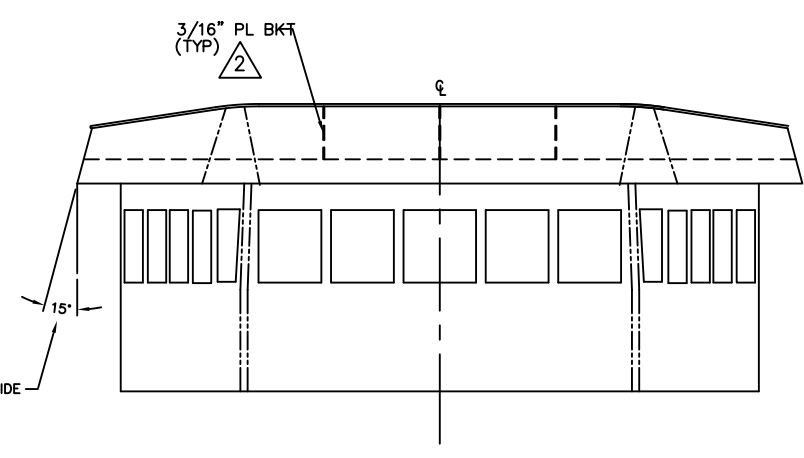
VISOR PLAN VIEW



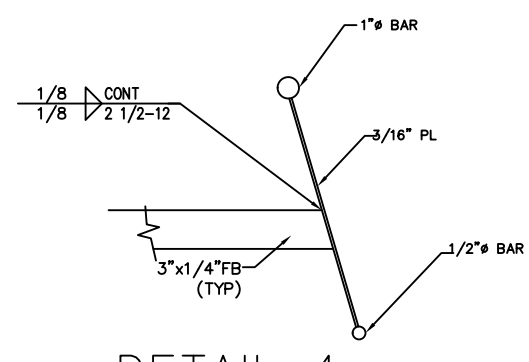
DETAIL 1
TYPICAL BRACKET
SCALE: NONE



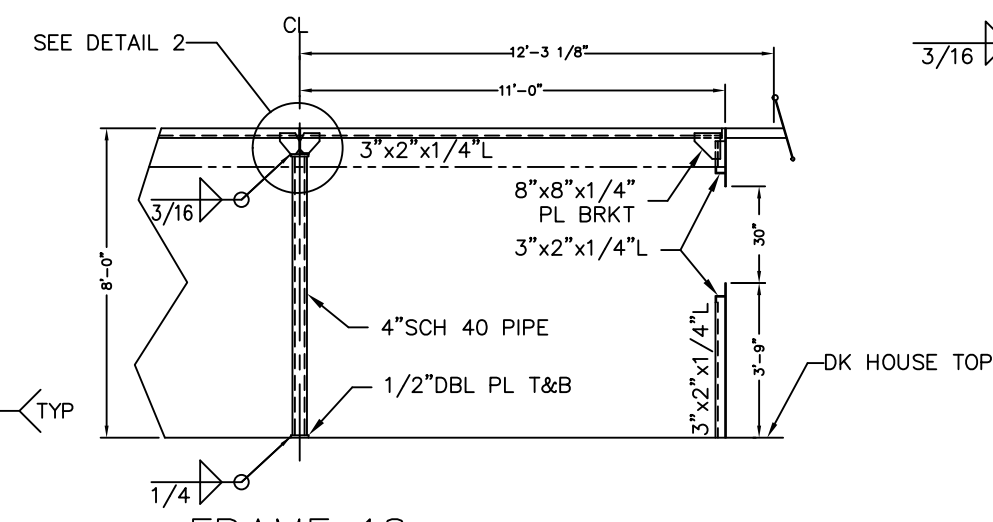
PILOT HOUSE FRONT
LOOKING FORWARD



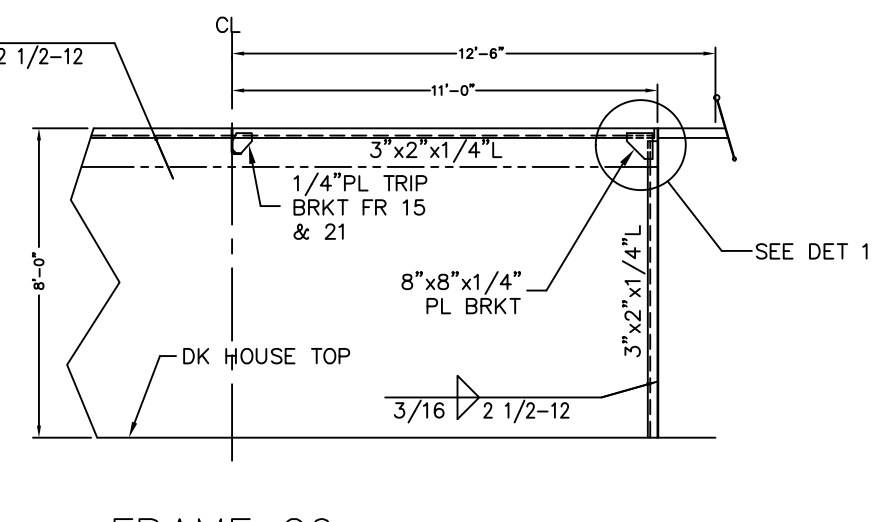
VISOR FRONT ELEVATION
LOOKING AFT



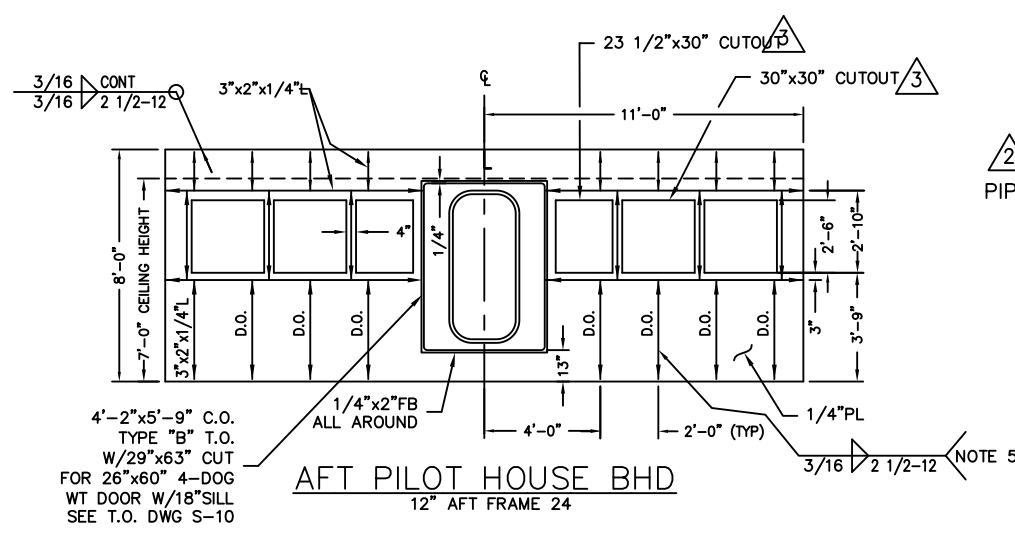
DETAIL 4
VISOR DETAIL
SCALE: NONE



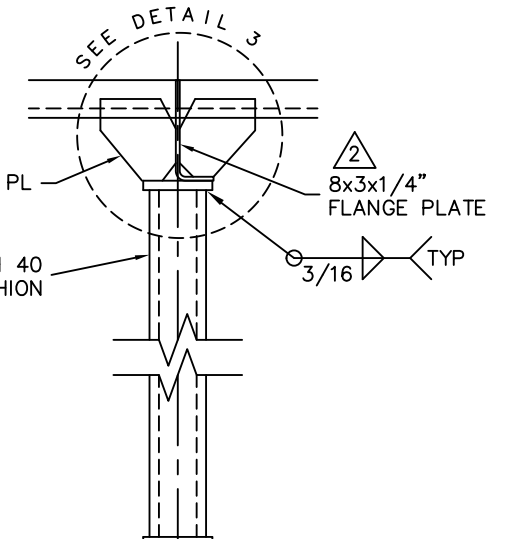
FRAME 18
3/8"=1'-0"



FRAME 20
TYPICAL FRAME
3/8"=1'-0"



AFT PILOT HOUSE BHD
12" AFT FRAME 24

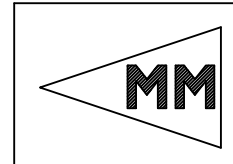


DETAIL 2
STANCHION DETAIL
SCALE: NONE

- GENERAL NOTES**
1. ALL FLANGES OF STIFF. OR GIRDERS ARE TO BE SNIPPED WHEN ENDS CONNECT TO BHDS, DECKS OR SHELL.
 2. ALL SNIPES TO BE 1 1/2"x1 1/2" UNLESS NOTED.
 3. ALL VENT DRAIN HOLES TO BE 3" RADIUS.
 4. UNBRACKETED STIFFENERS OF SHELL, WT OR OT BHDS & HOUSE FRONTS ARE TO HAVE DOUBLE CONTINUOUS WELDS FOR 1/10 OF THEIR LENGTH AT EACH END.
 5. UNBRACKETED STIFFENERS OF NONTIGHT STRUCTURAL BHDS, DK HOUSE SIDES AND AFTER ENDS ARE TO HAVE A PAIR OF MATCHED INTERMITTENT WELDS AT EACH END.
 6. ALL BRACKETS TO BE WELDED DBL. CONT.
 7. ALL FRAMES ARE VIEWED LOOKING AFT UNLESS NOTED.

DRAWN BY:	C.B.	DATE:	10-12-98
CHECKED BY:	RLP	DATE:	11/18/98
APPROVED BY:		DATE:	
APPROVED BY:		DATE:	
SCALE:	1/4"=1'-0" UNO	CONTRACT NO.:	S-185-32
<small>This drawing and its contents, specifications and design concept are proprietary information and may not be wholly or partially reproduced, transferred or used for manufacture without written consent from: MARINE MANAGEMENT INCORPORATED OR ROBERT L. PAYNE. Copyright 1998</small>			
DWG. NO.:	S-185-S6		

3	REMOVED CORNER RADIUS ON P.H. WINDOW CUT OUTS.	RLP 7/15/99
2	ADDED CONSTRUCTION NOTES.	RLP 2/28/99
1	ISSUED FOR CONSTRUCTION.	RLP 11/19/98
NO.	ALTERATIONS	BY/DATE
TITLE: 160'-0" x 40'-0" x 13'-0" RESEARCH VESSEL PILOT HOUSE CONSTRUCTION DETAILS		
PREPARED FOR: CAMERON OFFSHORE BOATS, INC. CAMERON, LOUISIANA		
MARINE MANAGEMENT INC. MARINE DESIGNERS and SURVEYORS P.O. Box: 1803 Ocean Springs, MS 39566-1803 Ph: 601-872-2846 Fax: 601-872-0606 Online: MMinc25@aol.com		SH: 1 OF: 1 ALT NO: 3



S-185-S6 REV.3