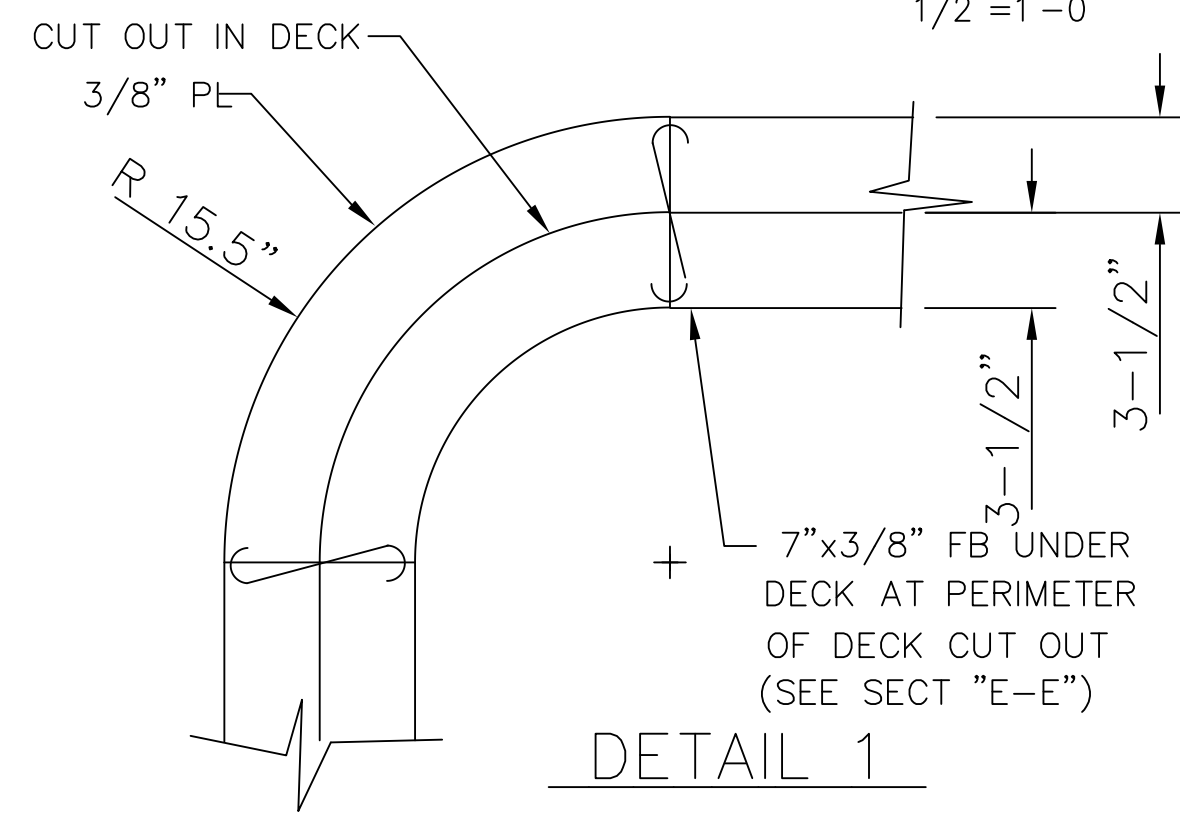


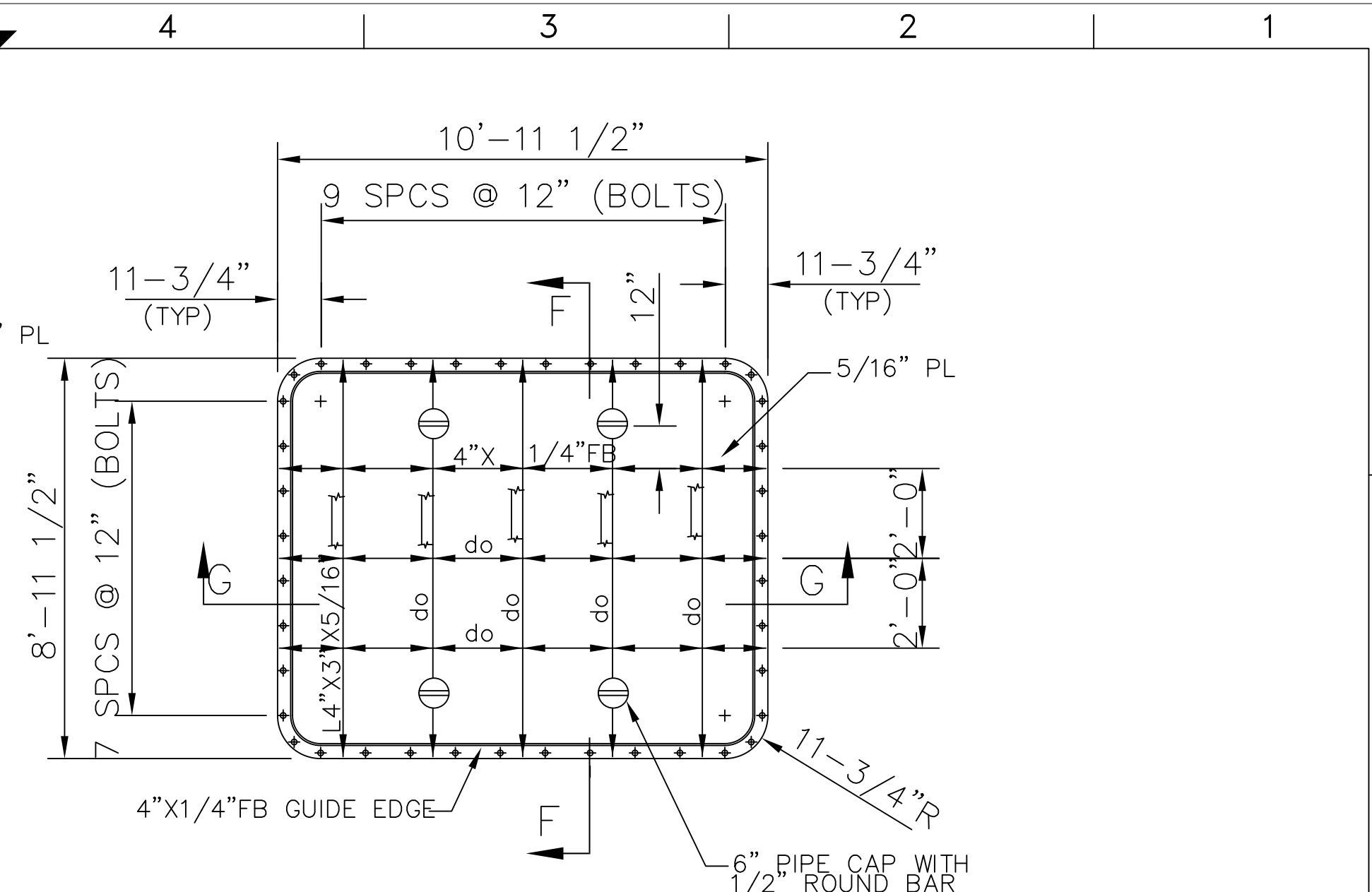
PLAN VIEW

SOFT PATCH ON FOCSLE DECK
1/2" = 1'-0"



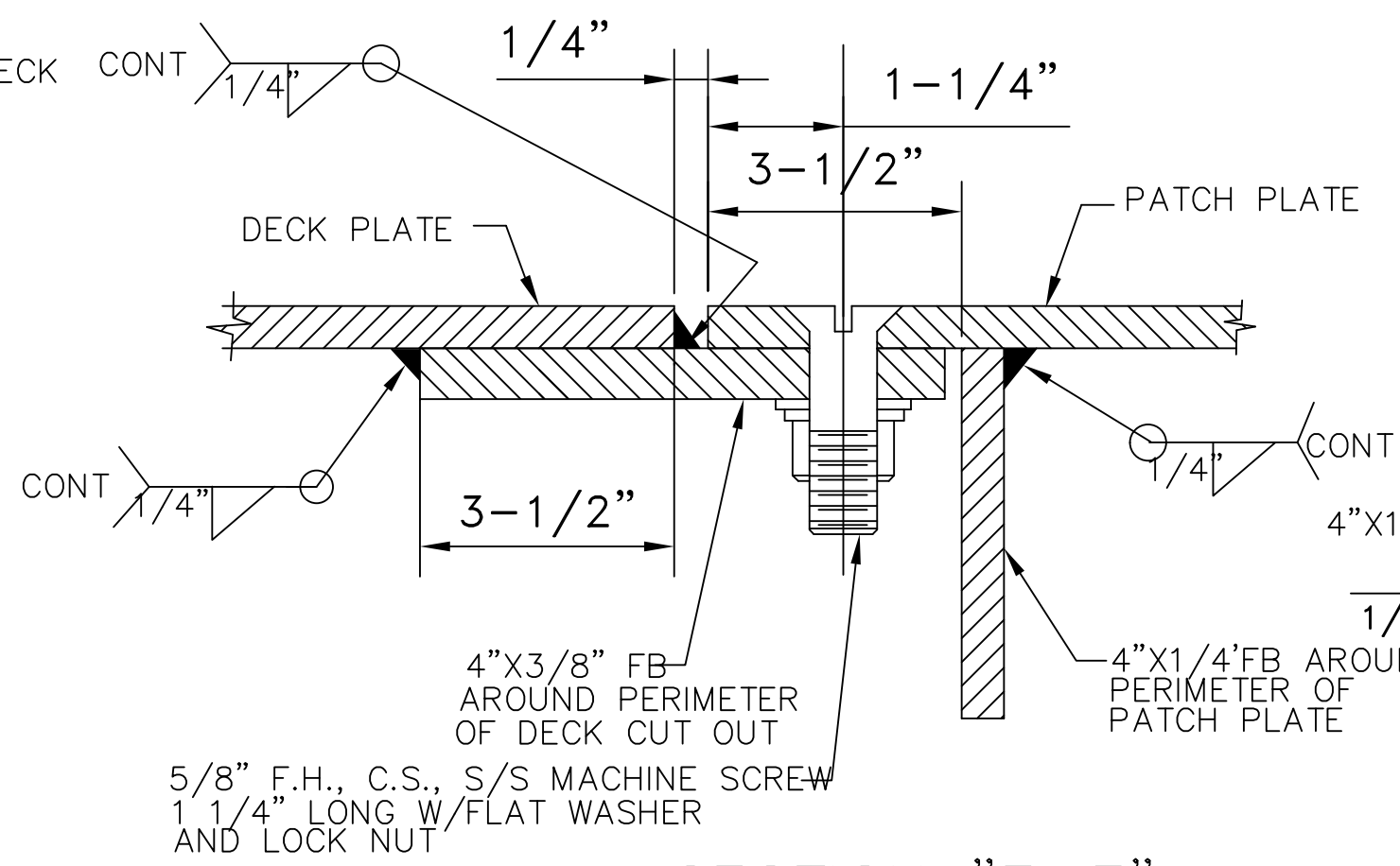
DETAIL 1

TYPICAL CORNER @ FLAT BAR
BASE PLATE BELOW SOFT PATCH
NTS



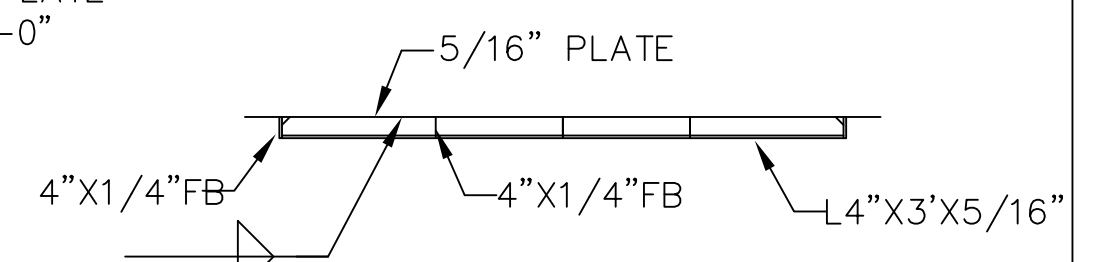
PLAN VIEW

HATCH COVER PLATE
1/2" = 1'-0"



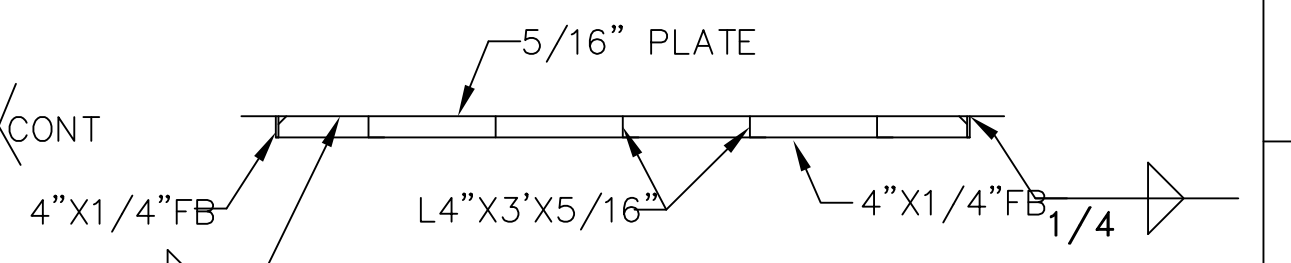
SECTION "E-E"

NOT TO SCALE



SECTION F-F

TRANSVERSE SECTION
1/2" = 1'-0"



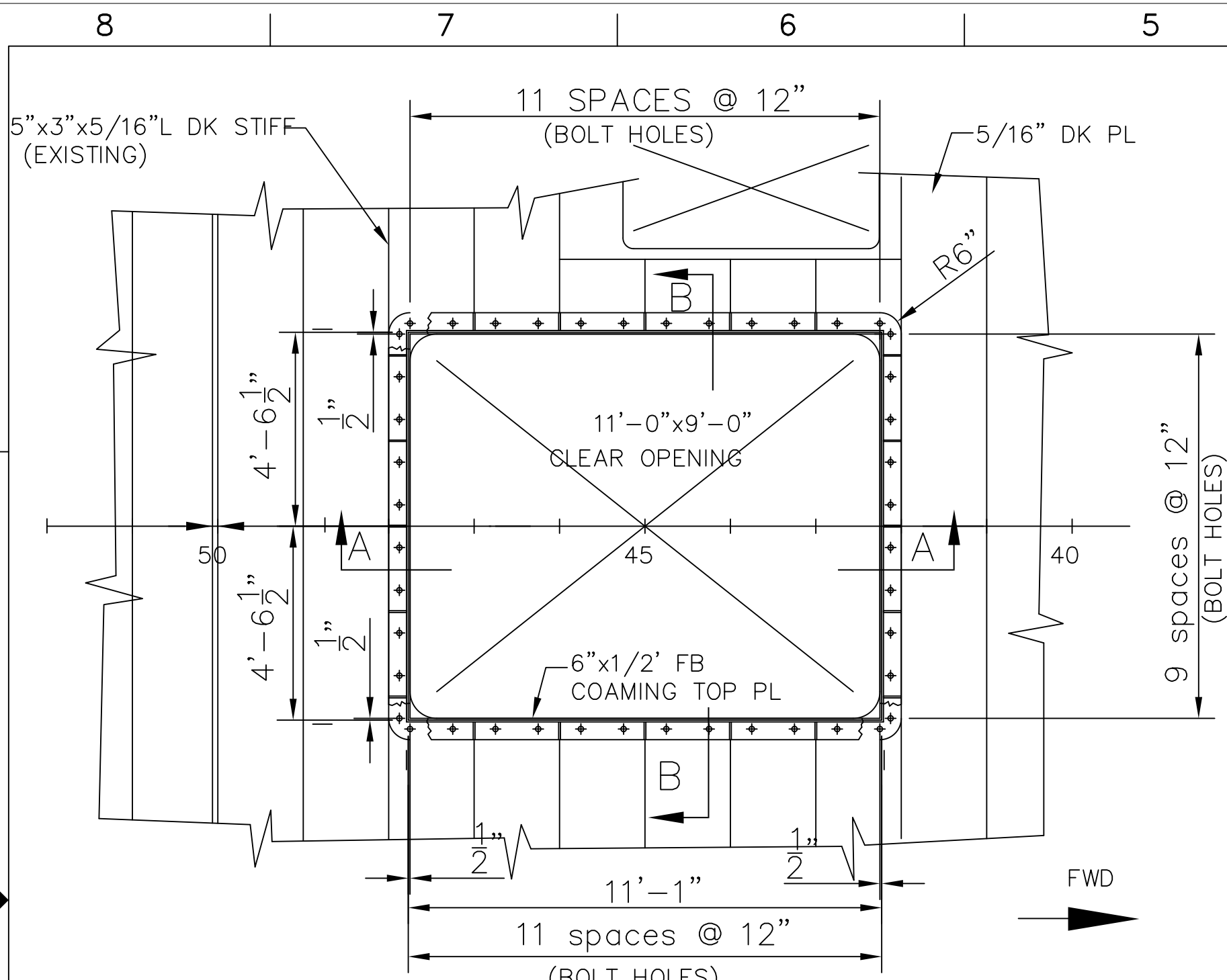
SECTION G-G

LONGITUDINAL SECTION
1/2" = 1'-0"

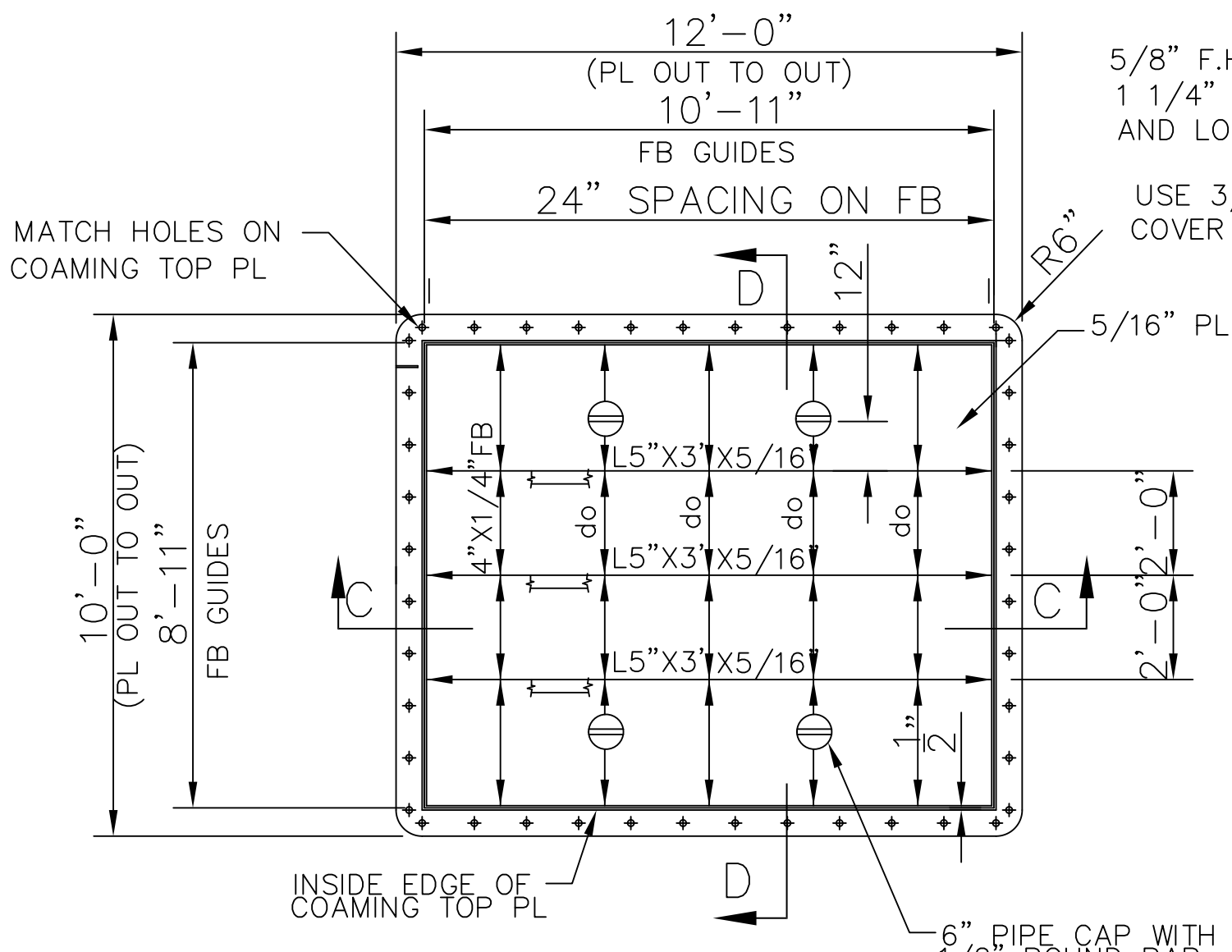
TITLE: HATCHWAY DETAILS

DWG. NO: S-185-S12 | SH: 2 OF 2 | ALT NO: 0

MM MARINE MANAGEMENT INC.
MARINE DESIGNERS & SURVEYORS
P.O. Box 1903 Ocean Springs, MS 39566-1903
Ph: 601-872-2846 Fax: 601-872-0606 Online: rpoyn@mmdesign.com



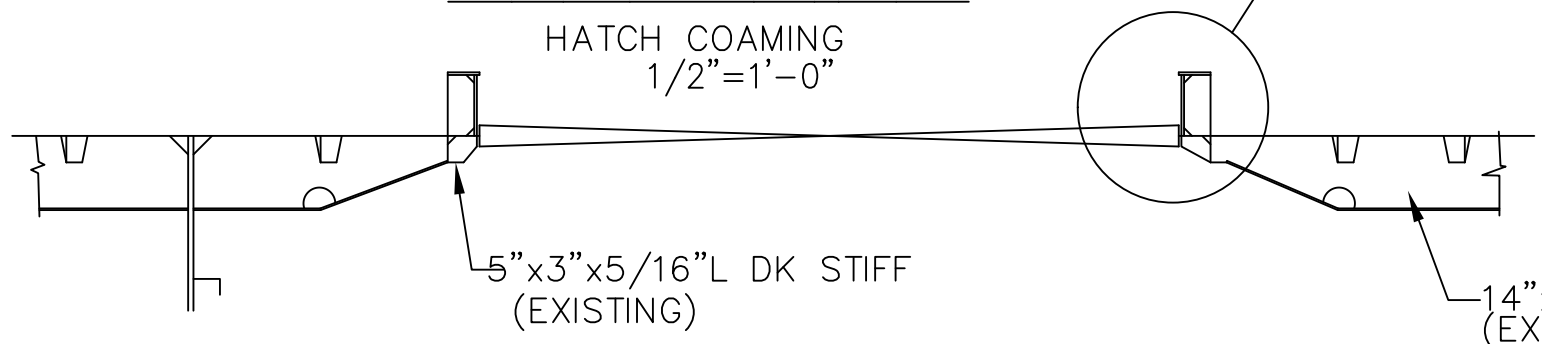
PLAN VIEW



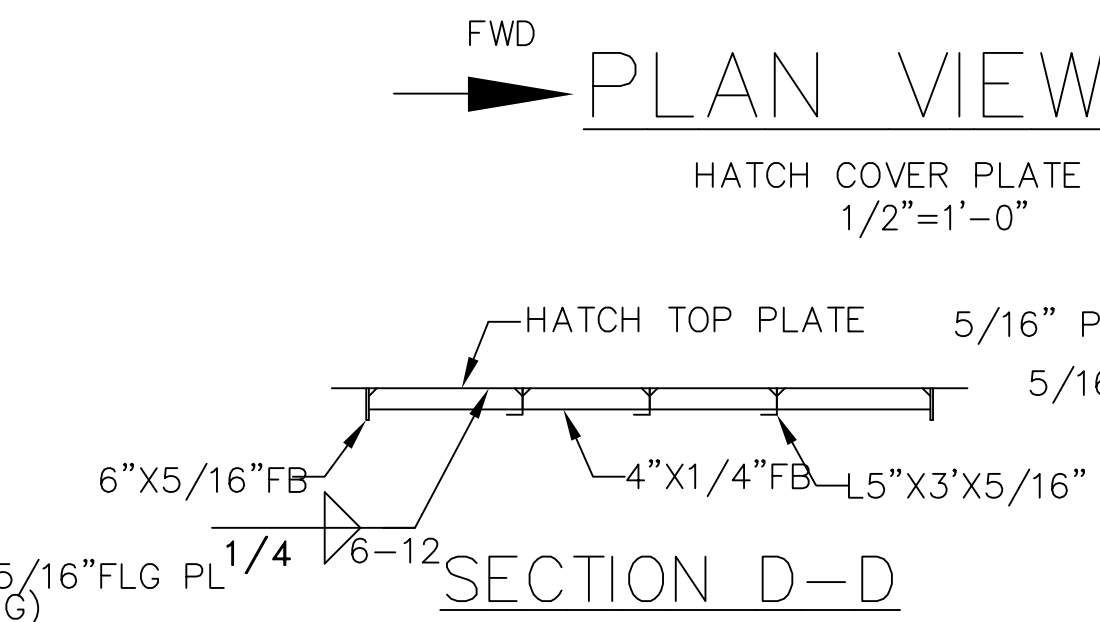
PLAN VIEW

BOLT SPEC.
5/8" F.H., C.S., S/S MACHINE SCREW
1 1/4" LONG W/FLAT WASHER
AND LOCK NUT

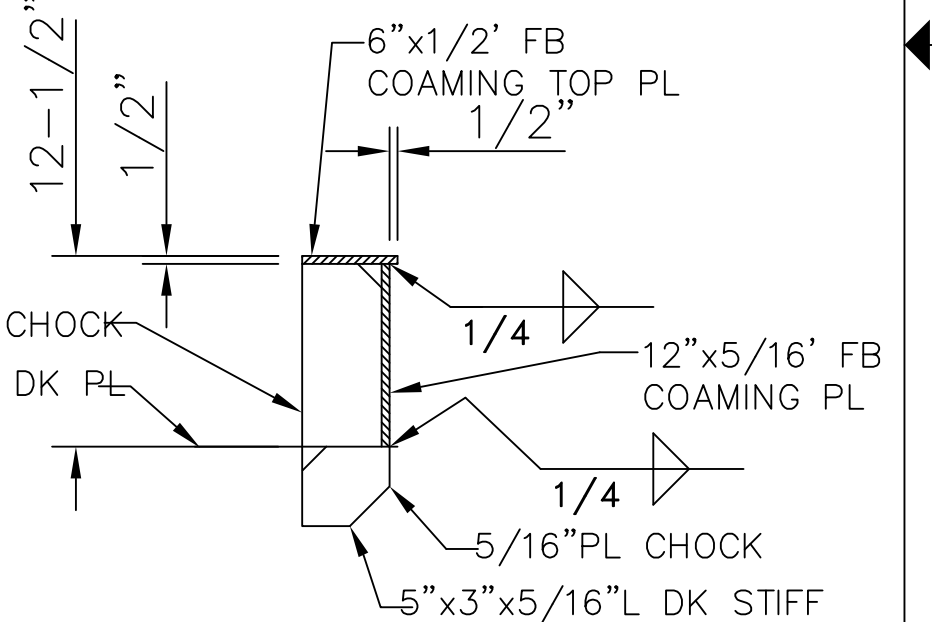
USE 3/8" NEOPRENE GASKET AT
COVER PLATE BASE.



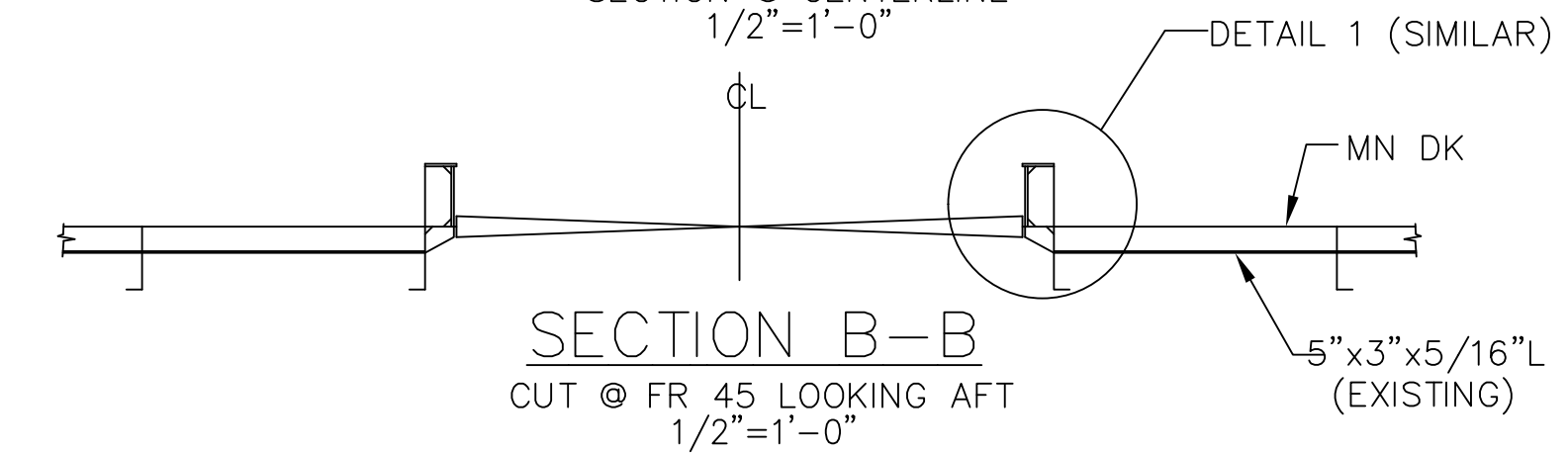
SECTION A-A
SECTION @ CENTERLINE
1/2" = 1'-0"



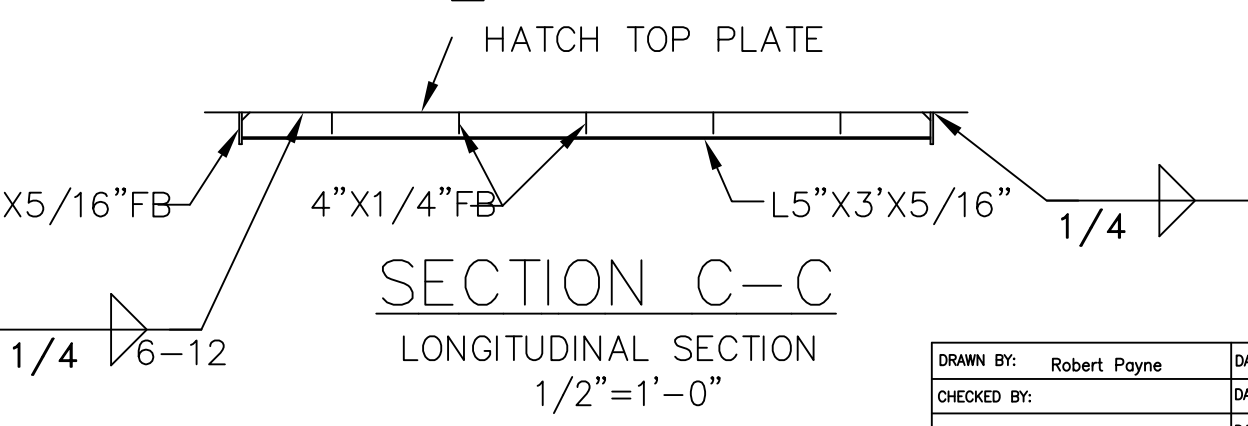
SECTION D-D
TRANSVERSE SECTION
1/2" = 1'-0"



DETAIL 1
TYPICAL COAMING DETAIL
1-1/2" = 1'-0"



SECTION B-B
CUT @ FR 45 LOOKING AFT
1/2" = 1'-0"



SECTION C-C
LONGITUDINAL SECTION
1/2" = 1'-0"

DRAWN BY: Robert Payne DATE: 7/30/99
CHECKED BY: DATE:
APPROVED BY: DATE:
SCALE: 1/2" = 1'-0" CONTRACT NO: S-185-32
This drawing and its contents, specifications and design concept are proprietary information and may not be wholly or partially reproduced, transferred or used for manufacture without written consent from MARINE MANAGEMENT INCORPORATED OR ROBERT L. PAYNE. Copyright 2000
DWG. NO: S-185-S12

NO.	ALTERATIONS	BY/DATE
TITLE:	160'-0" x 40'-0" x 13'-0" RESEARCH VESSEL	
HATCHWAY DETAILS		
PREPARED FOR:	CAMERON OFFSHORE BOATS, INC. CAMERON, LOUISIANA	
MARINE MANAGEMENT INC. MARINE DESIGNERS & SURVEYORS P.O. Box 1903 Ocean Springs, MS 38966-1903 Ph: 601-872-2846 Fax: 601-872-0606 Online: rpayne@mminc.com	SHT:	1
	OF:	2
ALT NO:	0	