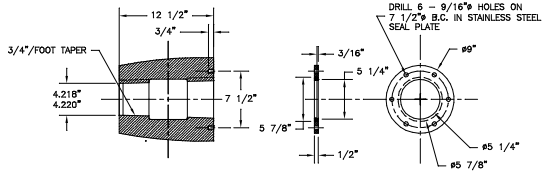
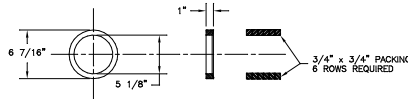


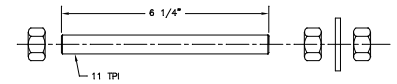
PIPE CAP
2 REQUIRED



PROPELLER HUB & SEAL
2 REQUIRED

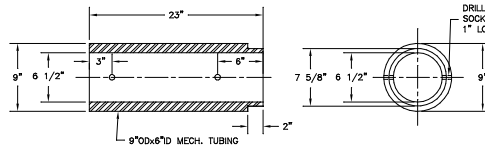


NECK RING (BRASS)
2 REQUIRED

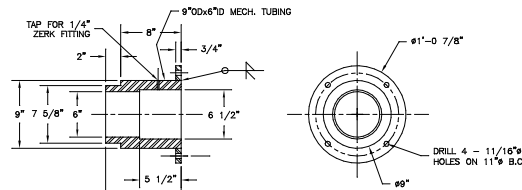


5/8" GLAND STUDS
6 REQUIRED (STAINLESS STEEL)
SCALES NONE

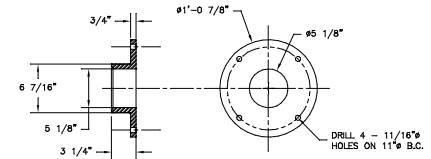
PIPE CAP & SEALS TO BE USED ON ABS CLASSED VESSEL ONLY.



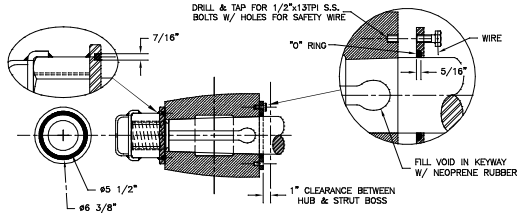
STERN TUBE BEARING HOUSING (STEEL)
2 REQUIRED



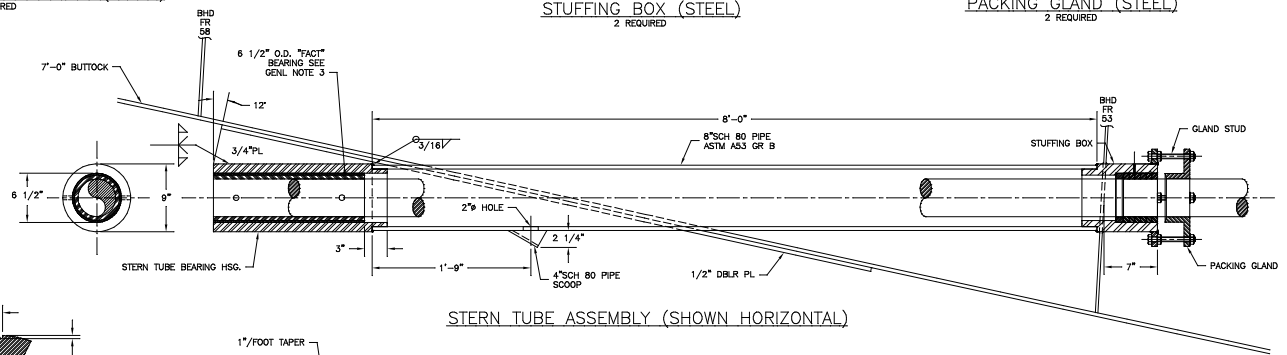
STUFFING BOX (STEEL)
2 REQUIRED



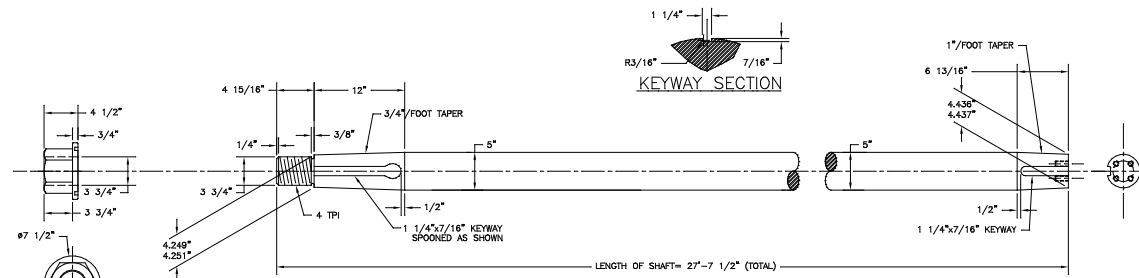
PACKING GLAND (STEEL)
2 REQUIRED



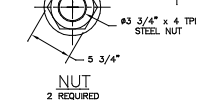
PROPELLER HUB ASSEMBLY



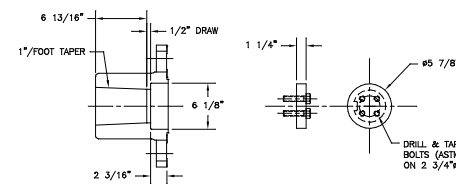
STERN TUBE ASSEMBLY (SHOWN HORIZONTAL)



5" Ø AQUAMET 17 TAIL SHAFT
2 REQUIRED



NUT
2 REQUIRED

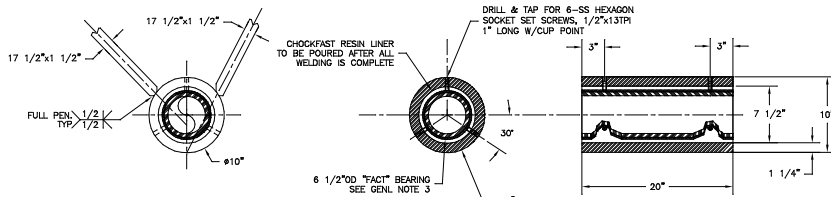


SHAFT COUPLING
COUPLING BOLTS ARE FURNISHED WITH TWIN DISC GEAR

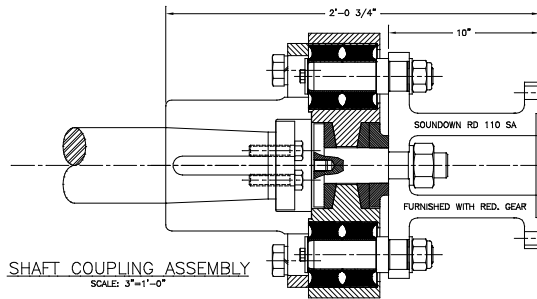
FIELD CHECK ALL DIMENSIONS TO SUIT PURCHASED EQUIPMENT
ENGINE: CATERPILLAR 3508B, 850HP @ 1200 RPM.
REDUCTION GEAR: TWIN DISC MG 6690-00SG, 3.21/1 RATIO.
BEARINGS: JOHNSON DURAMAX, CODE NAME "FACT"
PROPELLER: 5 BLADE, BRONZE, 64"x57", .75 DAR

GENERAL NOTES

1. STUFFING BOX DESIGNED FOR 5" SHAFT WITH 6 ROWS OF 3/4"x3/4" PACKING.
2. ALL TUBING IS ASTM A 53-65 GRADE B MECHANICAL TUBING.
3. JOHNSON DURAMAX BEARING "FACT" 6 1/2"OD x 5"ID x 20"LG (QTY 4).
4. KEY STOCK TO BE EQUAL TO AQUAMET 17.



10"OD x 7.5"ID MECH. TUBE STRUT BARREL
2 REQUIRED



SHAFT COUPLING ASSEMBLY
SCALE: 3"=1'-0"

REV.	DESCRIPTION	DATE	BY
REVISIONS			
MASTER BOAT BUILDERS, INC.			
P.O. Box 702 Bayou LaBatre, AL 36509			
150'-0" x 36'-0" x 12'-0" OSV			
Drawn by: C.B.	Approved by:	Scale: 1 1/2"=1'-0"	
Std. No. 354		Sheet: 8-8-02	
MAIN ENGINE SHAFT & DETAILS			
Sheet: 1 of 1	Drawing Number:	M-1	
Contract No.			