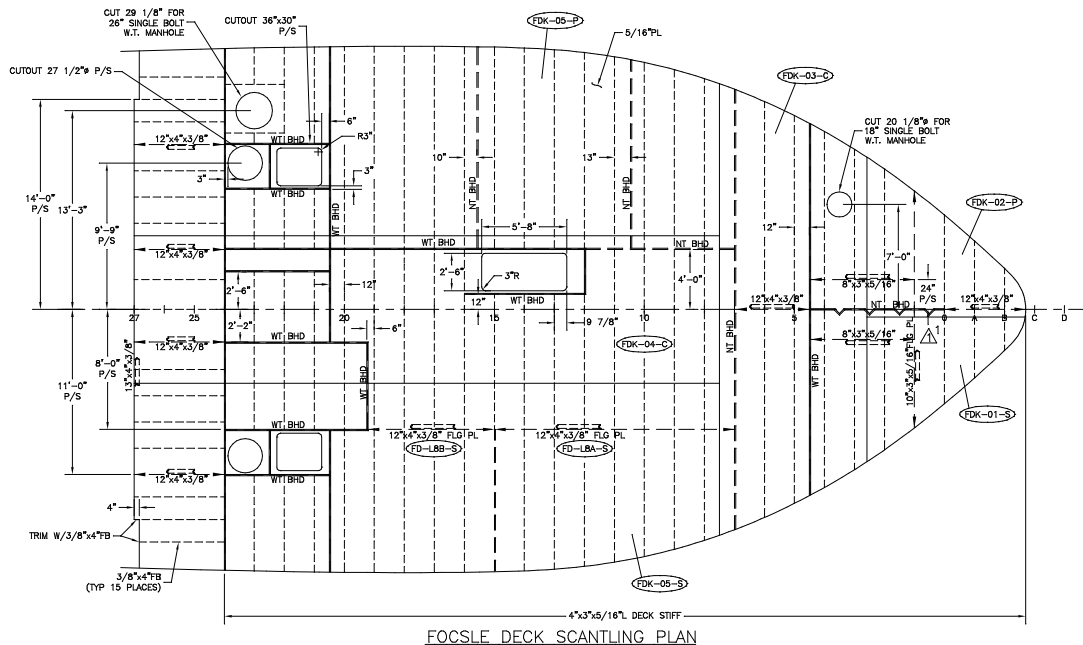
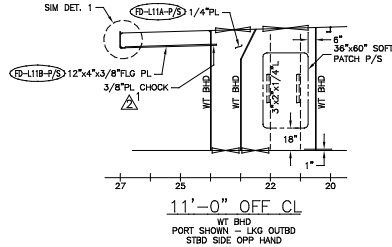
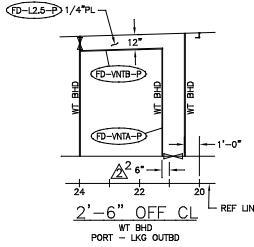
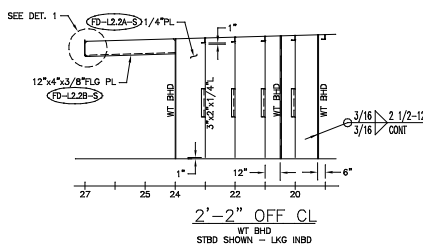
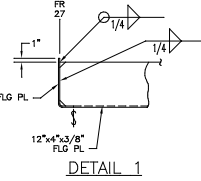
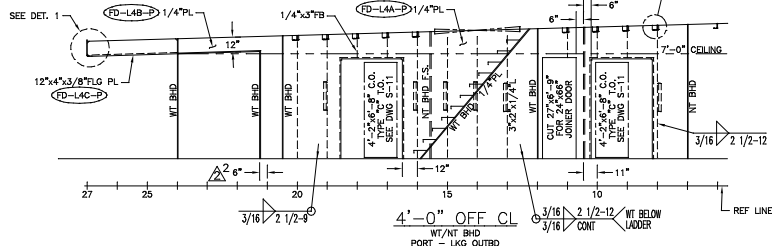
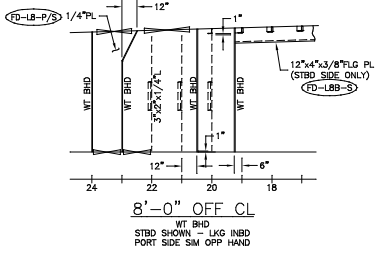
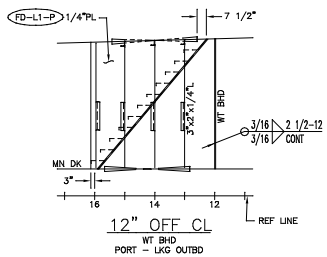


SIDE SHELL STRINGER PLAN
4'-0" ABV MAIN DECK



FOCSLE DECK SCANTLING PLAN



GENERAL NOTES

1. MAIN DECK DESIGNED FOR 200LBS/FT. LOADING FROM FR 24 PVD AND 540LBS/FT² FROM FRAME 24 AFT.
2. VESSEL CERTIFICATION: USCG SUBCHAPTER L, 36 OFF-SHORE WORKERS PLUS CREW WITH ABS FULL OCEAN LOAD LINE, MALTESE CROSS A1, AMS.
3. ALL FLANGES OF STIFF. OR GIRDERS ARE TO BE SNIPED WHEN ENDS CONNECT TO BHDS, DECKS OR SHELL.
4. ALL SNIPES TO BE 1 1/2"x1 1/2" UNLESS NOTED.
5. ALL VENT DRAIN HOLES TO BE 3" RADIUS.
6. UNBRACKETED STIFFENERS OF SHELL, WT OR OT BHDS & HOUSE FRONTS ARE TO HAVE DOUBLE CONTINUOUS WELDS FOR 1/10 OF THEIR LENGTH AT EACH END.
7. UNBRACKETED STIFFENERS OF NONTIGHT STRUCTURAL BHDS, DK HOUSE SIDES AND AFTER ENDS ARE TO HAVE A PAIR OF MATCHED INTERMITTENT WELDS AT EACH END.
8. ALL BRACKETS TO BE WELDED DBL. CONT.
9. FOR REFERENCE TO STRUCTURAL DETAILS SEE DWG S-10.
10. VENT OVERFLOW HEIGHTS FOR TANKS ARE AS FOLLOWS:
FR 24 & FND = 17'-1/2" ABV FOCSLE DK.
AFT FR 24 = 30" ABV MAIN DK.
11. LIQUID MUD TANKS DESIGNED FOR 2.0 SPEC. GRAVITY. MAX. S.G. OF LIQUID = 1.05 ELSEWHERE.

1.	11'-0" OCL ADDED CHOCK TO BACK-UP FLG. ABV CHANGES PER ABS LTR DTD SEPT 12-2002.	1-8-03	CB
2.	4'-0" & 2'-6" OCL MOVED AFT BHD TO 6" AFT FR 21. 3. ADDED LOFTED PIECE MARKS THROUGHOUT.	9-5-02	CB
1.	ADDED FLANGE PL AT FRAME 1 & AT 24" OFF CL P/S BETWEEN FR 1 & 4 1/2.	7-12-02	
REV. DESCRIPTION REVISIONS			
MASTER BOAT BUILDERS, INC.			
P.O. Box 702 Boyou LaBatre, AL 36509			
150'-0" x 36'-0" x 12'-0"			
OSV			
Drawn By:	C. BRAUN	Approved By:	Scale: 1/4" = 1'-0"
Full No.:	354	Date:	7-12-02
FOCSLE DK SCANTLING & STRL BHDS			
Sheet:	1 of 1	Drawing Number:	S-3
Contract No.:			2